

# Kingston's Local Plan

Our vision for Kingston - Summary document



First draft of the Local Plan Consultation (Regulation 18)  
28 November 2022 - 28 February 2023

[www.kingston.gov.uk/localplan](http://www.kingston.gov.uk/localplan)



THE ROYAL BOROUGH OF  
**KINGSTON**  
UPON THAMES



# What's in this summary document

|           |  |           |
|-----------|--|-----------|
| <b>1.</b> | <b>Introduction</b>                                  | <b>3</b>  |
| <b>2.</b> | <b>Our proposed vision</b>                           | <b>5</b>  |
| <b>3.</b> | <b>Aspirations for our Neighbourhoods</b>            | <b>6</b>  |
| <b>4.</b> | <b>How we plan to manage development in Kingston</b> | <b>10</b> |
|           | a. Sustainable development                           | 10        |
|           | b. Climate change and environmental sustainability   | 12        |
|           | c. Design and heritage                               | 14        |
|           | d. Housing delivery                                  | 16        |
|           | e. Economy and town centres                          | 18        |
|           | f. Social infrastructure                             | 20        |
|           | g. Natural environment and green infrastructure      | 22        |
|           | h. Transport and connectivity                        | 24        |
| <b>5.</b> | <b>How you can get involved</b>                      | <b>26</b> |
| <b>6.</b> | <b>Consultation events</b>                           | <b>27</b> |

# 1 Introduction



## What is the Local Plan?

Kingston's Local Plan sets out a vision for how we want the borough to develop in the future. It has an impact on everyone living, working, studying or visiting Kingston because it will guide and shape what can be built and where in the next 20 years. It will be used to assess all future planning applications so we need to get it right.

This first draft of the new Local Plan has been informed by two previous phases of community engagement, in 2019 and 2021, when many people shared their aspirations and ideas for the future of the borough.

We want to consult with you again to hear what you support and if anything is missing or needs changing.

Our Local Plan will identify where change and development can best take place, to make sure

Kingston has the right new homes, workplaces, green spaces, transport and facilities, in the right places, for current and future generations.

By encouraging only the most sustainable developments it will address the important issues facing our borough including the climate emergency and improving biodiversity.

We want to make sure we get the right development in the right places.

We have to produce a new Local Plan by the end of 2023. The sooner we have one, the sooner we can judge planning applications with up-to-date policies. We can then make sure development is planned in a coordinated way and protect the borough's features that we cherish the most, such as our local parks and historic buildings.

## Why are we preparing a new Local Plan?



Ensure our Local Plan is up-to-date. It is used to decide planning applications.



To respond to the climate emergency which has been declared by the council.



Deliver on the aspirations of our communities and make sure this is a vibrant and inclusive borough to live, work, play and study.



Meet Kingston's needs as London grows.



To support our borough's recovery from COVID-19 and ensure it is resilient for the future.

# About this summary document



The first draft of the new Local Plan has been published for consultation. Two phases of community engagement have already taken place to help develop Kingston's draft new Local Plan and policies map.

This summary document records what you've told us so far and gives you an overview of the key policies (or guidance) that has been drafted to steer future development in the borough, responding, as much as possible, to the feedback we received from our communities.

The full draft new Local Plan document can be viewed on our website or copies are available at a range of locations in the borough. There are also a number of events taking place where you can meet and discuss it. See our website for more details [www.kingston.gov.uk/localplan](http://www.kingston.gov.uk/localplan)

We want everyone with an interest in Kingston's future to give us feedback on the draft document and its policies – this will ensure that it reflects the aspirations of our diverse communities.

**This summary document is not a formal public consultation document – you can find that on our website, at [www.kingston.gov.uk/localplan](http://www.kingston.gov.uk/localplan)**

## Next steps

Following this consultation we may refine the draft policies in response to the comments we receive and other evidence which is being collected.

We will share and ask for your views on a second draft of the Local Plan, called the 'publication version', in 2023.

A 'submission version' will then be submitted to the Secretary of State, together with a summary of the main issues raised, later in 2023.

## Timetable for preparing our new Local Plan



# 2

## Our proposed vision



We want to make Kingston a better borough by 2041. The Local Plan will help us to achieve this.



Environmentally we will become a sustainable, net zero carbon and climate change resilient borough.



We will support a strong and resilient local economy and ensure we protect and create the right employment spaces in the borough.



Kingston's rich character and heritage will be respected and enhanced for current and future generations, with heritage at the heart of new developments and regeneration.



Kingston's town centres and high streets will adapt to climate change and socio-economic shifts, and contain a wide mix of retailers, cafes and restaurants, with culture, leisure and other uses, supporting both their local communities and attracting others from beyond the borough boundary.



We will promote exemplary place-making through high-quality, sustainable design of all buildings and public spaces, to create greener, safer and accessible places.



We will work with partners to identify and coordinate the provision of social, physical and environmental infrastructure needed to support the development identified for the borough and work closely with our partners to make all necessary improvements.



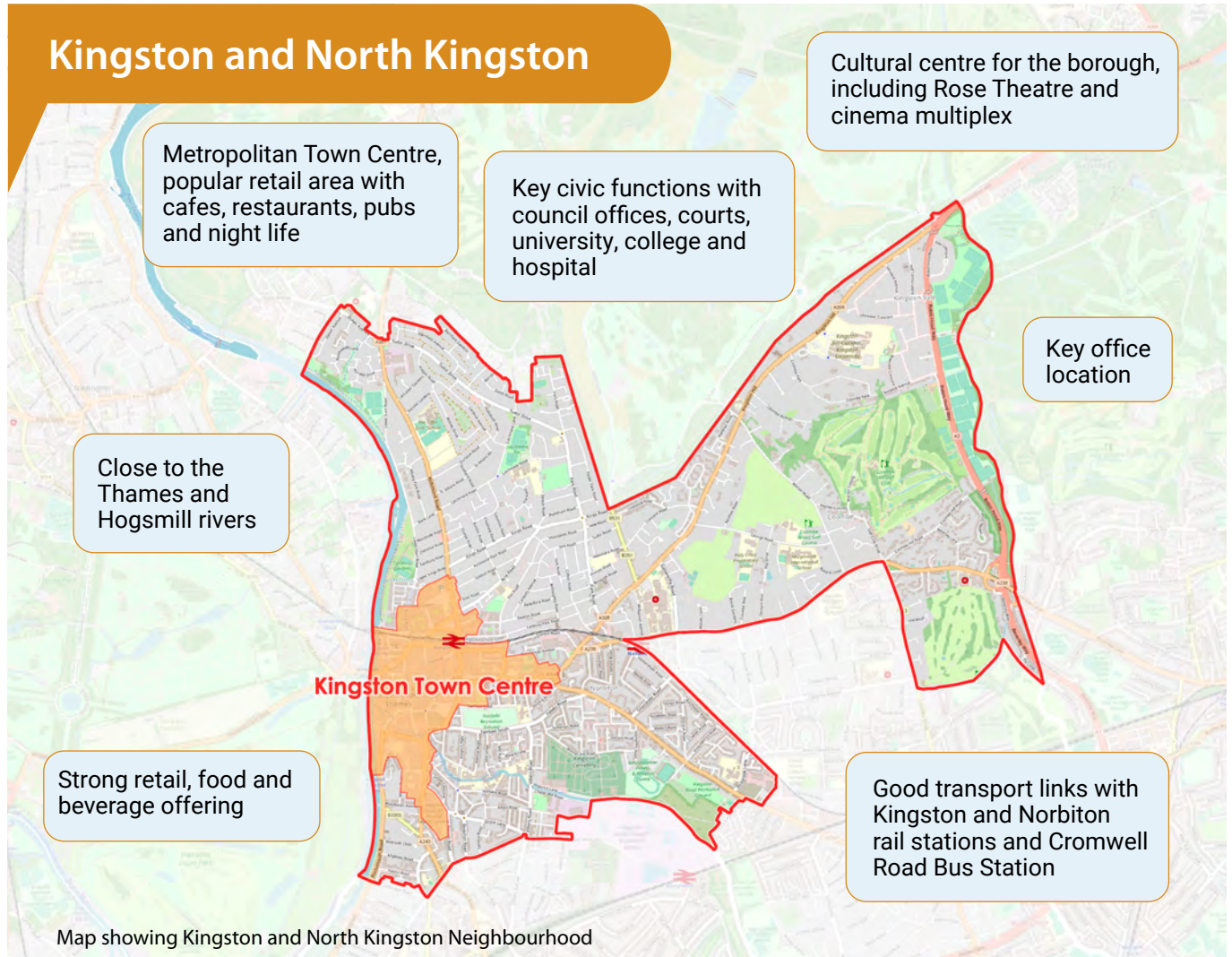
We will ensure we have enough homes for everyone to live in, and make sure we provide adaptable homes that meet the needs of our existing and future residents.



# 3

## Aspirations for our Neighbourhoods

### Kingston and North Kingston

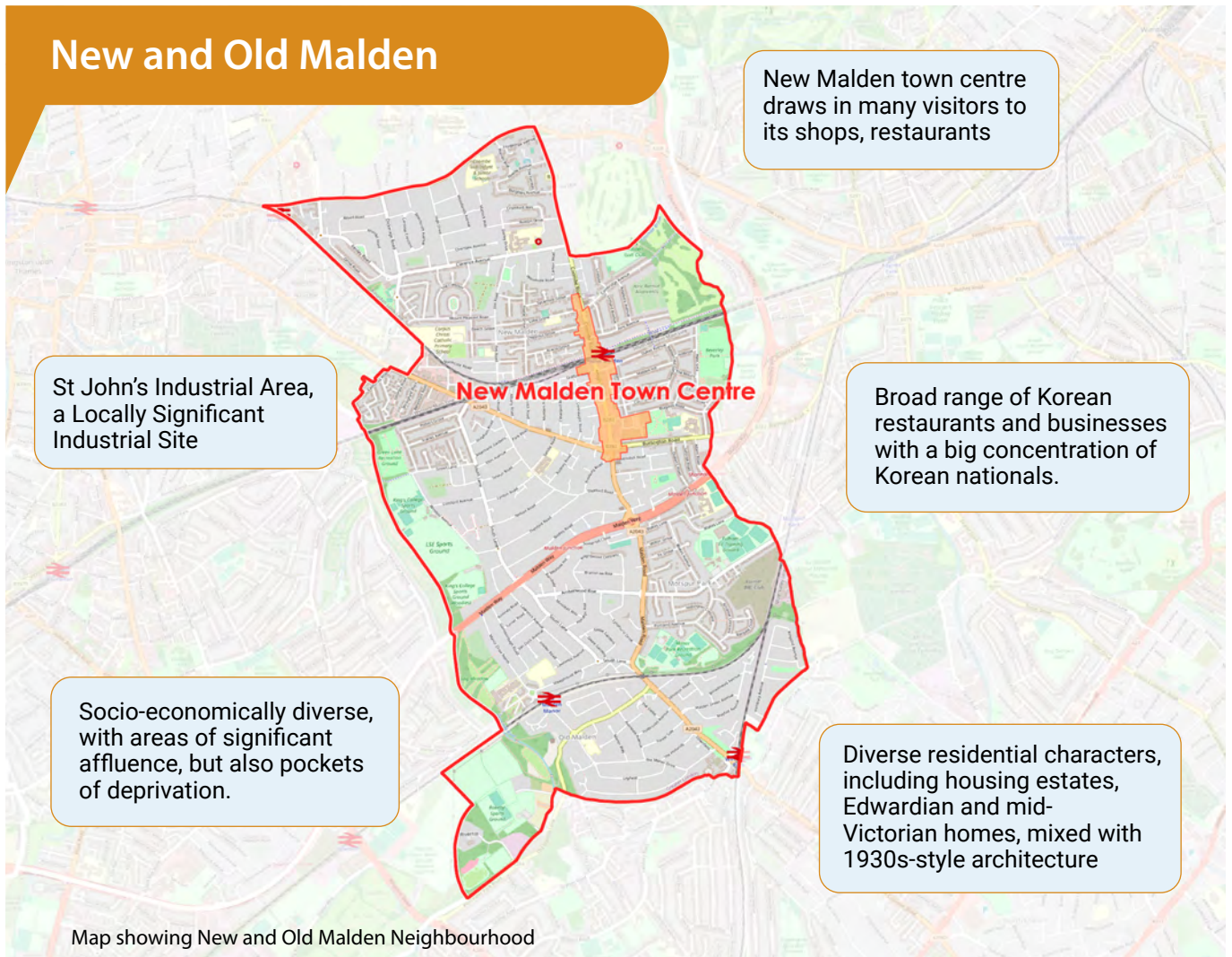


### Aspirations

- Breathe new life into Kingston town centre and support its regional appeal by expanding its appeal as a retail, cultural and leisure destination.
- Create high-quality spaces and places, taking advantage of unique features such as the riverside and parks.
- Support the development of a thriving night-time economy.
- Support and encourage new businesses and offices in Kingston town centre.
- Celebrate, respect and enhance the area's rich heritage and culture.
- Ensure that major development is managed in a sensitive and coordinated way.
- Ensure a balanced mix of homes, commercial and green spaces with the right supporting infrastructure.
- Continued improvements at the Kingston University campuses to meet evolving future needs.
- Improve access to leisure activities by creating a new leisure facility or arts/theatre venue.
- Provide economic growth through new offices and improving the quality of jobs available.
- Redevelopment of the Cambridge Road Estate.



## New and Old Malden



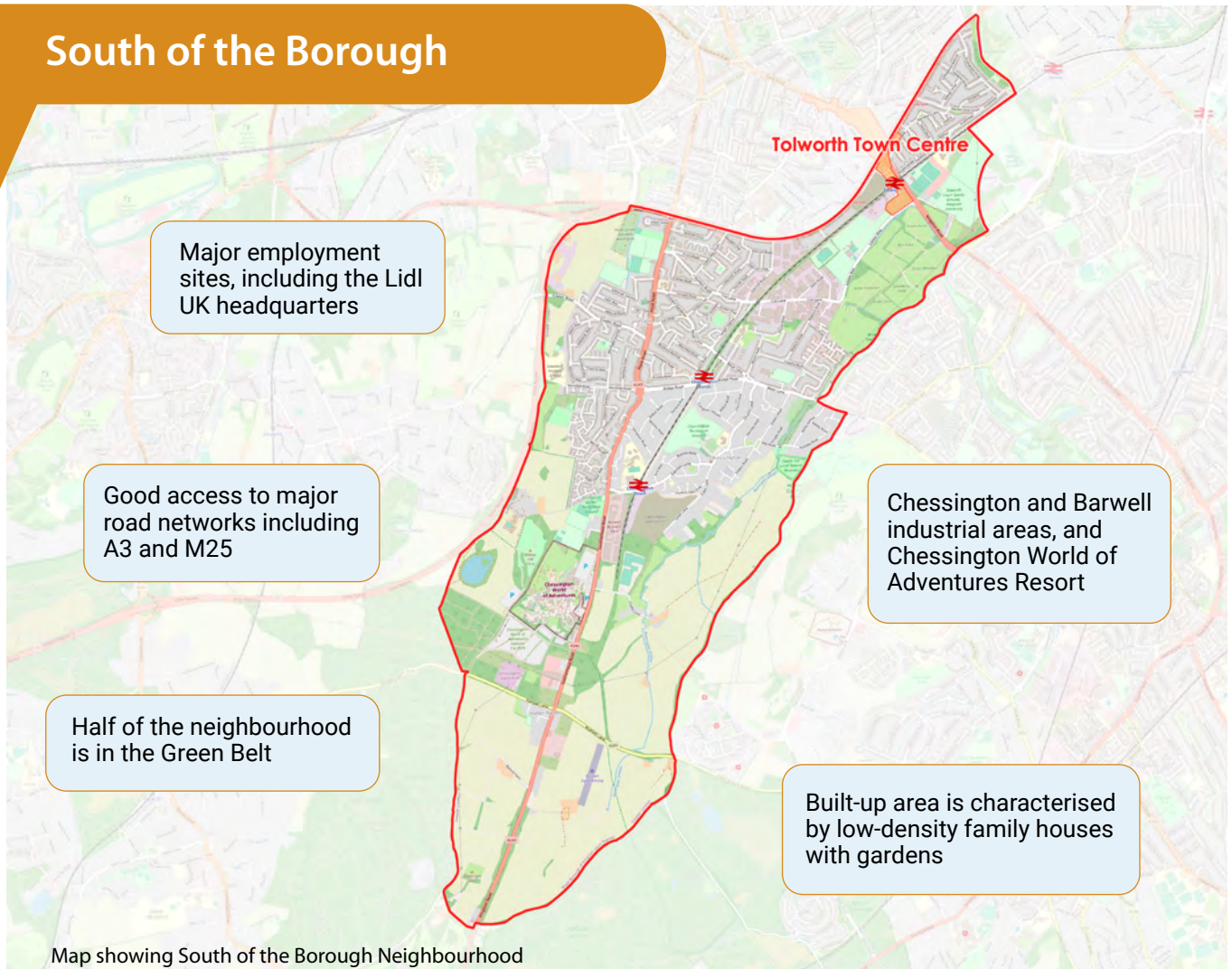
## Aspirations

- Reimagining the high street to ensure it provides both a retail and leisure destination, including enhanced cultural attractions.
- To become a destination for festivals, building on celebrations led by the diverse local Korean, Tamil and other communities.
- Redevelopment to include improvements to the public realm at Cocks Crescent and around New Malden train station.
- Improved communal spaces and facilities in the neighbourhood.
- Improved public access to the Hogsmill River and Beverley Brook.
- Improving existing green spaces and park facilities, including at Beverly Park, Manor Park and Dickerage Road Recreation Ground.
- Improving New Malden's night-time economy so that the high street is more of a restaurant and bar destination.



# Aspirations for our Neighbourhoods

## South of the Borough



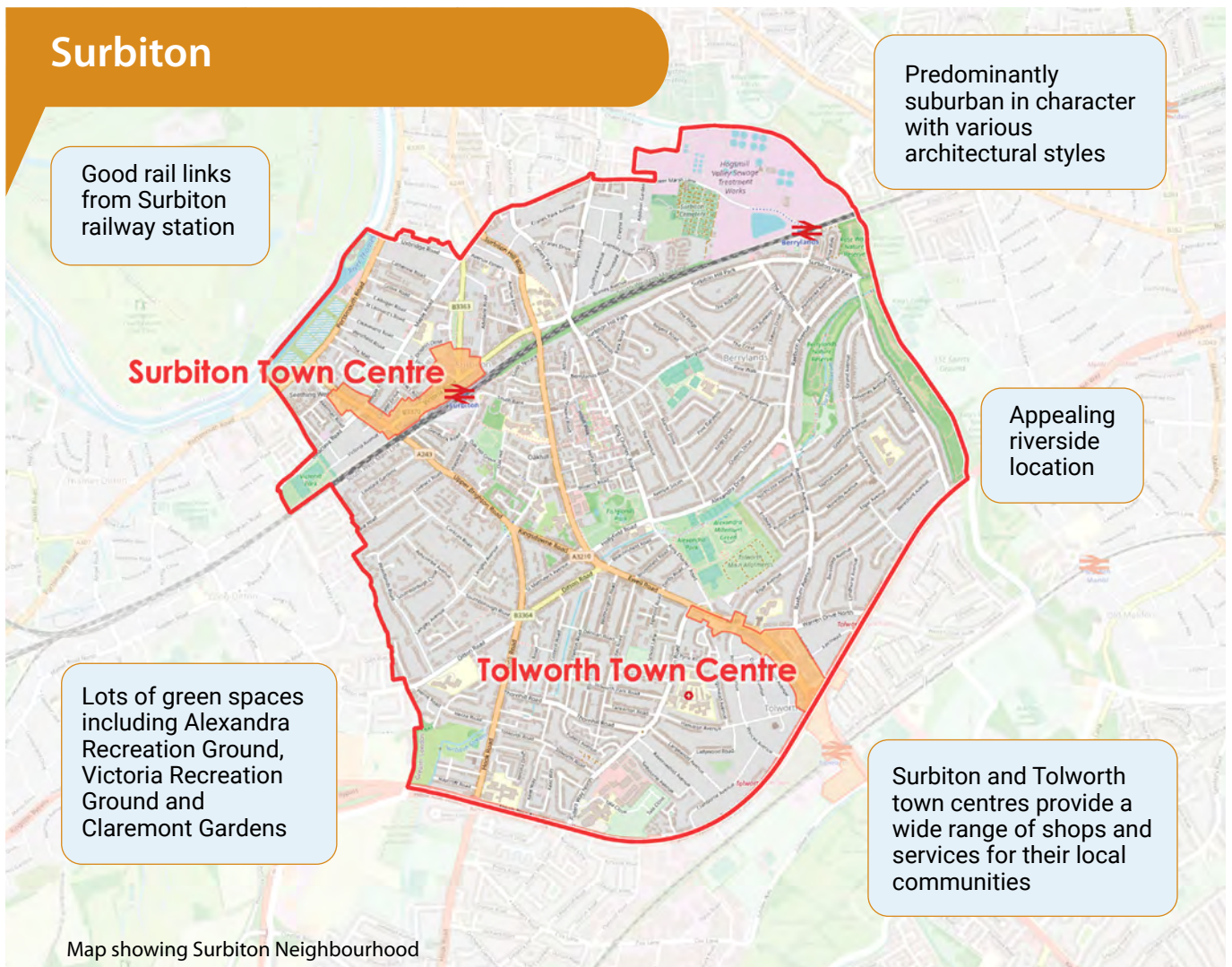
## Aspirations

- Continue to protect the quality and value of the countryside that falls within the green belt.
- Improvements to open spaces, including King George's Field.
- Support the upgrade of building stock within the Chessington Strategic Industrial Location to encourage businesses to grow and create new jobs.
- Work with relevant stakeholders to provide more cycle lanes in the neighbourhood.
- Celebrate, respect and enhance the area's rich heritage (including the aircraft industry) and culture.
- Supporting economic growth in the neighbourhood, which benefits from three industrial estates and the Chessington World of Adventures Resort.
- Improving communal spaces and facilities across the neighbourhood to meet the needs of existing and future residents, such as at the Hook Centre.
- Improving accessibility to leisure facilities.





## Surbiton



Good rail links from Surbiton railway station

Predominantly suburban in character with various architectural styles

Appealing riverside location

Lots of green spaces including Alexandra Recreation Ground, Victoria Recreation Ground and Claremont Gardens

Surbiton and Tolworth town centres provide a wide range of shops and services for their local communities

Map showing Surbiton Neighbourhood

## Aspirations



- Develop and implement innovative local projects which benefit and attract residents and businesses to the area.
- Promote and enhance the neighbourhood's parks, streets and open spaces to encourage more outdoor-based activity including at Alexandra Recreation Ground, Victoria Recreation Ground and Claremont Gardens.
- Improve the access and quality of the riverside paths including the ongoing work on the Hogsmill and other biodiversity and wildlife areas.
- Find suitable locations across the neighbourhood for a community health and well-being garden and allotments for vegetable and fruit growing.
- Recognise and enhance the neighbourhood's heritage and help to identify and enhance community projects which promote art and culture. Improve the public realm and facilities in the town centres and work with local groups to develop flexible, multi-purpose public spaces.

# 4

## How we plan to manage development in Kingston

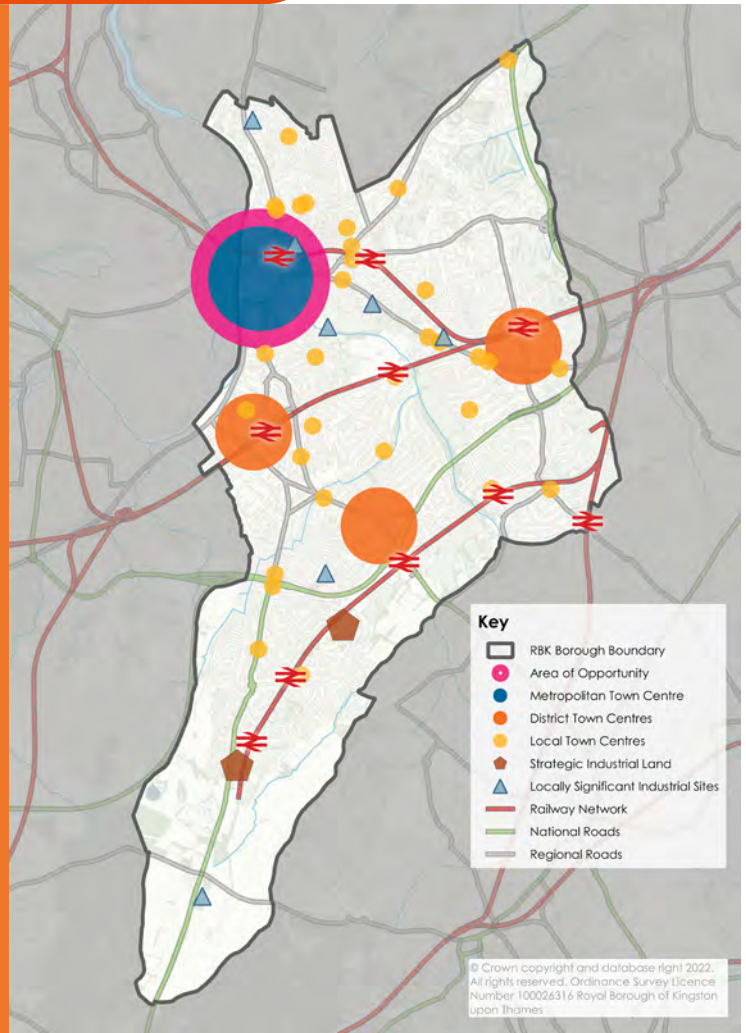


### Sustainable development

Draft policies

**Draft Sustainable Development Policy K1:**  
Sustainable Locations for Good Growth

**Draft Sustainable Development Policy K2:**  
Spatial Strategy for the Kingston Town Centre Area



Map showing Growth Strategy Diagram

### What you've told us

- There was a split between people who want to see growth focussed in town centres and those that want to see it spread more evenly throughout the borough
- Concerned about high density and tall developments and their location
- Majority of people don't want to see development on the green belt
- Concerned about Kingston's housing target set by the Mayor of London
- Want to see Kingston's heritage and character protected and respected
- Make sure enough social infrastructure such as doctors, schools and community facilities are in place for existing and new communities.





## What we have been considering

- We must plan the future of Kingston in a positive way to help us create much-needed new homes and jobs in a sustainable way
- The draft Local Plan sets out how development will be delivered in Kingston over the next 20 years. The overall approach is based on sustainability principles
- With the limited amount of land available for development in the borough it is important to use what is available as effectively as possible. This means that locations, such as Kingston town centre and the three district centres of New Malden, Surbiton and Tolworth, where there are good public transport links and existing facilities, will remain the focus for new homes, retail, employment, leisure and cultural activities to encourage people into the most sustainable locations. We are therefore likely to see higher density developments and some taller buildings in these locations.



## What we are proposing

- Make the best use of land by steering development to previously developed (brownfield) land, in the most sustainable and accessible parts of the borough such as near town centres and railway station. This will be balanced with some development on small sites dispersed throughout the borough
- Meet the borough's housing target on previously developed (brownfield) land, and protect our green belt. This will respond to the urgent need to provide more affordable homes and deliver more suitable housing for families, and housing that caters for different needs
- Conserve and enhance the borough's rich cultural heritage assets to ensure that the borough's character is preserved.



Read more about our draft policies on sustainable development in chapter 4 in the draft new Local Plan. Do you support our draft policies? Is there anything missing or you would like to see changed? Give us your feedback in our consultation response form or come and see us at one of our events.





# Climate change and environmental sustainability



## Draft policies

**Draft Strategic Policy KC1:** Climate Change and Environmental Sustainability

**Draft Policy KC2:** Air Quality

**Draft Policy KC3:** Flood Risk

**Draft Policy KC4:** Sustainable Drainage

**Draft Policy KC5:** Sustainable water and wastewater management

**Draft Policy KC6:** Managing Heat Risk

**Draft Policy KC7:** Minimising Greenhouse Emissions

**Draft Policy KC8:** Energy Infrastructure

**Draft Policy KC9:** Ground Contamination and Hazardous Substances

**Draft Policy KC10:** Sustainable Construction and Supporting the Circular Economy

**Draft Policy KC11:** Waste and Recycling Management

## What you've told us

- Concerned about air quality and pollution levels in our borough
- Concerned about flooding and water quality
- Make sure new developments are environmentally friendly and use less energy with tough environmental standards enforced
- Ensure existing buildings are refurbished or reused where possible rather than new buildings constructed
- Create district heating networks and deliver renewable energy
- Improve public transport, walking and cycling routes so people don't have to drive and have more electric vehicle charging points.

## What we have been thinking about

- Climate change is having an impact on Kingston. Kingston Council has declared a Climate Emergency and has published a Climate Action Plan, developed with our communities. This plan sets out a commitment to carbon neutrality in council operations by 2030, and carbon neutrality in the wider borough by 2038
- Development can significantly contribute to greenhouse gas emissions and needs to play its part tackling the climate emergency





- Kingston has been declared an Air Quality Management Area based on its high levels of air pollution. With traffic congestion contributing to the poor air quality across large parts of the borough, we need to encourage people not to use their cars
- Flooding is also an issue. Our location means some parts of the borough are at high risk of flooding, including areas that have been built on for a long time, such as Kingston town centre.

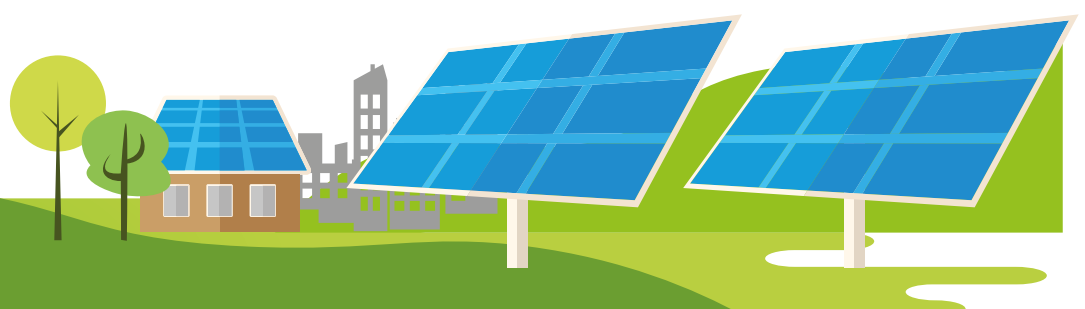
### We're proposing to...

- Require all new development to improve air quality where possible and does not contribute to existing areas of poor air quality
- Make sure all new development is net zero carbon, meaning, overall there is no contribution to greenhouse or climate change causing gases. Because many of the borough's development sites are small scale, we have extended this requirement to include development of all sizes. All carbon reduction targets should be met on-site, unless proven to be unfeasible
- Development proposals must prioritise the reuse and retrofit of existing buildings or must demonstrate that replacement with new buildings would be more sustainable in the long term

- New buildings must be designed for durability and flexibility and use sustainably-sourced, low impact and re-used or recycled materials
- We have updated our borough-wide flood risk study and will use this to inform planning decisions.
- Developments must be designed with extreme flood events in-mind, and avoid or minimise contributing to any flooding
- New developments must be water and energy efficient
- Improve walking and cycling routes to encourage and enable people to use cars less, or not at all.



Read more about our draft policies on climate change and environmental sustainability in chapter 5 in the draft new Local Plan. Do you support our draft policies? Is there anything missing or you would like to see changed? Give us your feedback in our consultation response form or come and see us at one of our events.



# Design and heritage



## Draft policies

**Draft Strategic Policy KD1:** Delivering High-quality Design

**Draft Policy KD2:** Design Considerations for Development

**Draft Policy KD3:** Amenity

**Draft Policy KD4:** Public Realm

**Draft Policy KD5:** Housing Quality and Standards

**Draft Policy KD6:** Residential Extensions, Alterations and Basements

**Draft Policy KD7:** Residential Amenity Space

**Draft Policy KD8:** Commercial Frontages and Signage

**Draft Policy KD9:** Telecommunications and Digital Infrastructure

**Draft Policy KD10:** Views Management

**Draft Policy KD11:** Tall Buildings

**Draft Strategic Policy KD12:** Heritage Assets

**Draft Policy KD13:** Development affecting Heritage Assets

**Draft Policy KD14:** Archaeology

## What you've told us

- Concerned about the impact of development on the character and heritage of Kingston
- Concerned about the height and density of new developments and new residents' access to outdoor space
- More should be done to enhance and celebrate our heritage
- Ensure developments are high quality and their design and the materials used, are sustainable.

## What we need to think about

- The borough has a rich and distinguished history
- The borough features 26 conservation areas, 162 listed buildings and structures and six scheduled monuments
- All development in Kingston must be managed in a way that is sensitive to and preserves local heritage
- The council is preparing Character Area Assessments to understand the appearance and characteristics of different areas and what we cherish the most in the borough. This will help us to ensure new developments meet the needs of new and existing communities and enhance rather than harm an area's unique qualities.





## We're proposing to...

- Preserve and enhance the historic environment. The plan expects the highest standards of design for all developments across the borough
- All major developments must follow a 'design-led approach', taking into account local context and character and be inclusive and accessible for all ages and disabilities
- The draft plan sets out locations where a tall building may be suitable. But all new tall buildings will have to respect its surroundings and views will be protected
- New developments will have to meet, and wherever possible exceed, London's housing standards.



Read more about our draft policies on design and heritage in chapter 6 in the draft new Local Plan. Do you support our draft policies? Is there anything missing or you would like to see changed? Give us your feedback in our consultation response form or come and see us at one of our events.



# Housing delivery



## Draft policies

**Draft Strategic Policy KH1:** Meeting the Borough's Housing Needs

**Draft Policy KH2:** Affordable Housing

**Draft Policy KH3:** Housing Size Mix

**Draft Policy KH4:** Build to Rent Housing

**Draft Policy KH5:** Specialist and Supported Living Housing

**Draft Policy KH6:** Shared Living Housing and Student Accommodation

**Draft Policy KH7:** Gypsies and Travellers

## What you've told us

- More should be done to make sure new homes have good sized rooms and access to outdoor space
- Consider converting empty buildings into housing
- Make sure new homes are built on previously developed land
- Concerns were raised about the lack of affordable homes and the number of new homes suitable for families with children, key workers, older people and people with a disability and vulnerable people.

## What we need to think about

- Kingston is an attractive place to live and work. Its population is projected to continue to grow throughout the plan period (up to 2041). We need to provide new homes to support our growing community
- The borough has been set a challenging target, to deliver approximately 1,000 new homes a year
- The council has identified that there is enough land to do this in the borough without building on the Green Belt or Metropolitan Open Land
- More affordable homes are needed. Around 3,500 households are now registered on the housing waiting list and 900 households are living in temporary accommodation
- We need to deliver more housing that is suitable for different people.





## We're proposing to...

- Secure more genuinely affordable homes. The draft plan sets a target on developments of 10 or more homes that 50% of those built on public land and 35% on private land, will be affordable housing. In Kingston, most of this should be either social rent or 'London affordable rent'
- Make sure new homes are delivered to meet the diverse needs of our community, with a balanced mix of different housing tenures, sizes and types, including specialist housing
- Require new homes to have good sized rooms and layouts and consider natural light, external storage space and provide year-round thermal comfort
- Make the best use of land we have to deliver the high quality homes we need
- That the majority of new homes will be provided in the most sustainable and accessible locations, including:
  - Kingston town centre area,
  - the borough's district centres (New Malden, Surbiton and Tolworth),
  - near railway stations and areas with good public transport connections
  - and on sites suitable for a range of residential and mixed-use developments.

## Draft site allocations

The draft Local Plan also contains a number of site allocations. These are sites that have been identified as being available for housing delivery over the first 10 years of the plan period. The detailed site descriptions and location plans can be found in Chapter 13 of the first draft of the new Local Plan.



Read more about our draft policies on housing delivery in chapter 7 in the draft new Local Plan. Do you support our draft policies? Is there anything missing or you would like to see changed? Give us your feedback in our consultation response form or come and see us at one of our events.





# Economy and town centres



## Draft policies

**Draft Strategic Policy KE1:** Supporting the Borough's Economy

**Draft Policy KE2:** Employment Uses

**Draft Policy KE3:** Development in Industrial Locations

**Draft Strategic Policy KE4:** Town Centres

**Draft Policy KE5:** Development in Town Centres

**Draft Policy KE6:** Main Town Centre Uses outside Town Centres

**Draft Policy KE7:** Visitor Accommodation

**Draft Policy KE8:** Hot Food Takeaways

**Draft Policy KE9:** Betting Offices

## What you've told us

- More should be done to revitalise our high streets and improve public spaces
- Prevent offices and shops in some areas being converted to homes
- Promote the evening and night-time economy
- Support small businesses, including start-ups, creative and independent businesses who need affordable accommodation
- Secure spaces for cultural events and performances
- Ensure there is reliable, high speed broadband for businesses to thrive and people to work from home.

## What we need to think about

- The COVID-19 pandemic has impacted the borough's town centres in many ways
- Having a range of shops remains important for the borough's town centres, but we also need to encourage a range of other facilities and events, to help them thrive. This includes having activities in the town centre at night time
- More affordable workspaces and office and industrial floorspace is needed in the borough
- Jobs and training are needed for our growing population.





## We're proposing to...

- Encourage a wider range of uses in town centres to make them lively places during the day and at night
- Protect convenience shops and cafes in small parades outside of town centres
- Support improvements to public and open spaces and make sure they meet safety and design standards
- Manage the over concentration of hot food takeaways and betting offices within town centres
- Support the temporary use of vacant buildings and land for art and cultural uses
- Support the diversification of the facilities and services in town centres

- Ensure at least 10% affordable workspace, to support for small and medium sized businesses, is provided in new commercial developments
- Protect existing and support proposals for new employment uses
- Encourage mixed use development, flexible workspace and intensifying how employment land is currently used.



Read more about our draft policies on economy and town centres in chapter 8 in the draft new Local Plan. Do you support our draft policies? Is there anything missing or you would like to see changed? Give us your feedback in our consultation response form or come and see us at one of our events.



# Social infrastructure



## Draft policies

**Draft Strategic Policy KS1:** Social Infrastructure

**Draft Policy KS2:** Healthcare Facilities

**Draft Policy KS3:** School, College and University Facilities

**Draft Policy KS4:** Community Facilities

**Draft Policy KS5:** Arts and Cultural Facilities

**Draft Policy KS6:** Sports Facilities

**Draft Policy KS7:** Play and Informal Recreation

**Draft Policy KS8:** Public Houses

## What you've told us

- Concerns about whether there will be enough community facilities (such as doctors and schools) to meet extra demand as the population in the borough grows and whether we have facilities which will meet people's needs when they get older
- More should be done to ensure good access to green spaces and leisure facilities which are important for people's health and wellbeing
- Protect libraries and youth centres which are highly valued
- Support cultural and community venues which residents rely on and enable us to have strong and inclusive communities.

## What we need to think about

- Social infrastructure has a crucial role in creating healthy, strong and inclusive communities
- Planning for social infrastructure can be difficult because it involves a range of organisations to work together, sometimes unsure about what may be required and how we will pay for it
- To make sure we have what we need, when we need it, we have to look ahead, work together and put plans in place.







## We're proposing to...

- Allocate enough land to provide the facilities we need in the future
- Protect existing social infrastructure from inappropriate development
- Make sure new developments contribute funds towards new social infrastructure in their local area
- Protect and support the creation of new cultural venues and facilities to make Kingston a cultural destination.

## Draft Infrastructure Delivery Plan

We have written an **Infrastructure Delivery Plan** which sets out what infrastructure we think we need in the borough in the future and how it will be paid for and delivered. This document will be regularly updated to respond to changing needs.

It can be read along with all of our other consultation documents.



Read more about our draft policies on social infrastructure in chapter 9 in the draft new Local Plan. Do you support our draft policies? Is there anything missing or you would like to see changed? Give us your feedback in our consultation response form or come and see us at one of our events.



# Natural environment and green infrastructure



## Draft policies

**Draft Strategic Policy KN1:** Green and Blue Infrastructure

**Draft Policy KN2:** Open Spaces

**Draft Policy KN3:** Biodiversity

**Draft Policy KN4:** Urban Greening and Trees

**Draft Policy KN5:** Food Growing

**Draft Policy KN6:** Green Belt and Metropolitan Open Land

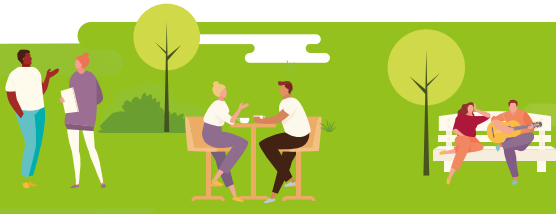
## What you've told us

- Concerned about the pressure placed on open spaces from growing population and new developments and the potential loss of Green Belt land and Metropolitan Open Land
- Worried about the impact of new development on the environment for example paving over green spaces increasing flood risk
- Create new areas of open space and improve public access and connections to local parks and other open spaces
- Plant more trees and green our borough
- Enhance wildlife habitats, improve biodiversity as part of new developments and make more space for nature
- Protect our rivers and improve access to the Hogsmill and Thames Rivers.

## What we need to think about

- Kingston is often perceived as a 'green and leafy borough'
- Over a third of the borough is designated as Green Belt or Metropolitan Open Land
- We have 39 designated Sites of Importance for Nature Conservation (SINC) and 12 Local Nature Reserves
- Some residents do not have close access to public open space
- Green spaces are important for health and well-being, as the pandemic highlighted
- New developments will mean more people will want to enjoy our parks and open spaces
- Although there have been some conservation successes in recent years, biodiversity loss and degradation of the ecosystems continue; a number of our SINC's are at risk
- We need to improve biodiversity in our borough. This will also help mitigate the impacts of climate change.





## We're proposing to...

- Protect and enhance green spaces and nature by implementing Kingston's Biodiversity Action Plan and improve public access to green spaces
- Work with partners to adopt more of a green approach
- Require major developments to create new open space
- Continue to protect mature trees
- All developments will be encouraged to improve public access and connections to local parks and other open spaces
- Preserve the openness of the green belt and open land and improve their public access
- Developments should incorporate urban greening measures such as suitable trees and vegetation, high-quality landscaping, and green roofs and walls

- Require all developments to deliver 30% Biodiversity Net Gain
- Support food growing projects on vacant land and prevent the loss of any allotments.



Read more about our draft policies on the natural environment in chapter 10 in the draft new Local Plan. Do you support our draft policies? Is there anything missing or you would like to see changed? Give us your feedback in our consultation response form or come and see us at one of our events.



# Transport and connectivity



## Draft policies

**Draft Strategic Policy KT1:** Strategic Approach to Transport

**Draft Policy KT2:** Sustainable Travel and Healthy Streets

**Draft Policy KT3:** Transport Infrastructure

**Draft Policy KT4:** Car Parking and Car Free Development

**Draft Policy KT5:** Sustainable Servicing

**Draft Policy KT6:** River Transport

## What you've told us

- Concerned about poor air quality
- Encourage people to walk or cycle and use their car less
- Concerned about safety and use of cycle lanes
- Provide usable, safe cycle storage space
- Public transport is overcrowded and needs improving
- There is too much traffic congestion
- Car parking is essential to support local businesses
- Increase electric vehicle charging points.

## What we need to think about

- Transport has a major impact on air quality, people's health and carbon emissions
- Since 2014 the borough has seen significant investment in cycling infrastructure through the Go Cycle programme. More improvements are needed
- A growing population will increase the pressure on existing transport infrastructure
- We need to make it easier and safer to get around the borough on foot, bicycle or public transport and encourage people to use their car less
- Kingston's rail network enables easy travel into central London but its capacity is limited, and it does not serve north-south travel within the borough well.





## We're proposing to...

- Promote public transport, walking and cycling, car clubs
- Require new developments to provide cycle parking, provide electric vehicle charging points if parking is proposed and help support and fund transport improvements
- Help deliver the Mayor of London's target of 80% of all trips in London to be made by foot, cycle or public transport by 2041, with transport schemes such as those set out in Kingston Town Centre Movement Strategy and Local Implementation Plan
- Work with partners who have direct control of public transport and help to make it accessible and attractive

- Support the roll out of electric vehicle charging infrastructure across the borough
- The draft plan has a balanced approach to parking as we recognise that some people, businesses and organisations rely on their cars but will restrict parking in new developments, especially where there is good access to public transport
- We are preparing a parking strategy to manage the amount of parking we need and have.



Read more about our draft policies on transport and connectivity in chapter 11 in the draft new Local Plan. Do you support our draft policies? Is there anything missing or you would like to see changed? Give us your feedback in our consultation response form or come and see us at one of our events.



# 5

## How you can get involved



The consultation on the first draft of the new Local Plan is taking place from 28 November 2022 until 28 February 2023.

All Local Plan consultation documents can be read and downloaded from [www.kingston.gov.uk/localplan](http://www.kingston.gov.uk/localplan).

The council's website and engagement platform, Kingston: Let's Talk has the first draft of the Local Plan, policies map, evidence documents and a consultation response form for you to give us your comments.

At this stage in the consultation process, we ask you to be as specific as possible with your comments, using the sections on the form to make it clear which policy or paragraph you are referring to.

We want to know if you support the policies set out, if you feel there is anything which needs to be changed, or if you feel anything is missing.

You can give us your comments in a number of ways.

- Online: complete the consultation response form on our website [www.kingston.gov.uk/localplan](http://www.kingston.gov.uk/localplan)
- By email at [localplan@kingston.gov.uk](mailto:localplan@kingston.gov.uk)
- By post by writing to Strategic Planning Team, The Royal Borough of Kingston upon Thames, Guildhall 2, High Street, Kingston upon Thames, KT1 1EU
- By speaking to us at one of the online or face-to-face events.

Hard copies of the first draft Local Plan and our consultation response form can be found in any open library in the borough or at the council's offices. Alternatively, you can also request a hard copy by:

- Emailing the planning policy team at [localplan@kingston.gov.uk](mailto:localplan@kingston.gov.uk)
- Calling our contact centre on 020 8547 5000
- Writing to: Strategic Planning Team, The Royal Borough of Kingston upon Thames, Guildhall 2, High Street, Kingston upon Thames, KT1 1EU.

Kingston's Local Plan sets out a vision for how we want the borough to develop in the future. It has an impact on everyone living, working, studying or visiting Kingston because it will guide and shape what can be built and where in the next 20 years. It will be used to assess all future planning applications so we need to get it right.



Your feedback will help us to refine the policies in the draft plan, so that Kingston develops in the way we want it to.

# 6

## Consultation events

We will be visiting different parts of the borough throughout the consultation period to promote the first draft of the new Local Plan and answer any questions. Some of the in-person and online events already scheduled are listed below. Come and see us to find out more and give us your feedback. Please check details and register to attend on our website.

This is just an initial list of events. Details of further events will be published on our website [www.kingston.gov.uk/localplan](http://www.kingston.gov.uk/localplan) throughout the consultation.



- **Tuesday 13 December,**  
2.30pm-3.45pm, Kingston Quaker Centre, Fairfield East, Kingston upon Thames, KT1 2PT
- **Thursday 15 December,**  
6pm-7.30pm, online webinar event covering all aspects of the draft Local Plan
- **Thursday 12 January,**  
6pm-7.30pm, online webinar event - with a focus on sustainable development and economy and town centres
- **Wednesday 18 January,**  
6.30pm-8pm, Malden Centre, Blagdon Rd, New Malden KT3 4TA
- **Wednesday 25 January,**  
6pm-7.30pm, online webinar event - with a focus on sustainable development, housing, design and heritage
- **Tuesday 31 January,**  
2pm-3.30pm, The King's Centre, Coppard Gardens, Chessington KT9 2GZ
- **Tuesday 7 February,**  
6pm-7.30pm, online webinar event - with a focus on sustainable development, climate change, sustainability, and the natural environment

- **Wednesday 22 February,**  
6pm-7.30pm, online webinar event - with a focus on sustainable development, transport & connectivity and social infrastructure

### **A pilot Urban Room is being opened in the Market House, in Kingston's Market Place, KT1 1JS, throughout January and February 2023.**

This is a joint project between Kingston Council, Kingston University, the Kingston Society, the North Kingston Neighbourhood Forum and Chessington District Residents' Association to create a space where people can understand, debate and get involved discussing the borough's future.

This will be staffed by members of the council's planning and place making teams, to talk to people about the draft Local Plan, every Thursday 10pm-4pm or drop-in on other days to see what's happening.

# KINGSTON'S LOCAL PLAN

The Local Plan will shape the borough from **2019 - 2041**



**How to find out more and share your views.**

**You can read the first draft of the new Local Plan and share your comments in a number of ways.**

- Online by visiting [www.kingston.gov.uk/localplan](http://www.kingston.gov.uk/localplan)
- By visiting one of the borough's open libraries or the council offices where printed copies are available
- By emailing [localplan@kingston.gov.uk](mailto:localplan@kingston.gov.uk)
- Writing to us at: Strategic Planning Team, The Royal Borough of Kingston upon Thames, Guildhall 2, High Street, Kingston upon Thames, KT1 1EU
- Or come and see us at one of our online or in-person events.

If you need the draft Local Plan document in a more accessible format or you have questions or comments, we can help you. Please email [localplan@kingston.gov.uk](mailto:localplan@kingston.gov.uk) or call our contact centre on 020 8547 5000.

[www.kingston.gov.uk/localplan](http://www.kingston.gov.uk/localplan)



THE ROYAL BOROUGH OF  
**KINGSTON**  
UPON THAMES