



KINGSTON UPON THAMES' INFRASTRUCTURE DELIVERY PLAN

Local Plan Evidence Base

Draft Document
October 2022

TABLE OF CONTENTS

1. INTRODUCTION	3
1.1 PURPOSE OF THIS IDP	3
1.2 OVERVIEW OF PLANNING POLICY	3
1.3 DUTY TO COOPERATE.....	3
1.5 LIMITATIONS OF THIS IDP	5
2. DEVELOPMENT GROWTH	6
2.1 THE LONDON PLAN	6
2.2 HOUSING DEVELOPMENTS	6
2.3 EMPLOYMENT DEVELOPMENTS	6
2.4 POPULATION CHANGE	6
3. DELIVERING INFRASTRUCTURE PROJECTS	7
3.1 BIDDING PROCESS AND FUNDING ALLOCATION	7
4. IDP PROJECT PRIORITISATION LIST	8
4.1 OVERVIEW.....	8
4.2 EDUCATION	9
4.2.1 <i>Introduction</i>	9
4.2.2 <i>RBK responsibilities and requirements</i>	9
4.2.3 <i>Evidence base</i>	9
4.2.4 <i>Education project list</i>	10
4.3 SPORT, COMMUNITY, AND LEISURE	14
4.3.1 <i>Introduction</i>	14
4.3.2 <i>RBK responsibilities and requirements</i>	14
4.3.3 <i>Evidence base</i>	14
4.3.4 <i>Sport community and leisure project list</i>	15
4.4 HEALTHCARE	17
4.4.1 <i>Introduction</i>	17
4.4.2 <i>RBK responsibilities and requirements</i>	17
4.4.3 <i>Evidence base</i>	17
4.4.4 <i>Healthcare project list</i>	18
4.5 GREEN INFRASTRUCTURE.....	20
4.5.1 <i>Introduction</i>	20

4.5.2 RBK responsibilities and requirements	20
4.5.3 Evidence base.....	20
4.5.4 Green infrastructure project list	21
4.6 WASTE	24
4.6.1 Introduction.....	24
4.6.2 RBK responsibilities and requirements	24
4.6.3 Evidence base.....	24
4.6.4 Waste project list	25
4.7 REGENERATION	26
4.7.1 Introduction.....	26
4.7.2 RBK responsibilities and requirements	26
4.7.3 Evidence base.....	26
4.7.4 Regeneration project list.....	27
4.8 CLIMATE ACTION	29
4.8.1 Introduction.....	29
4.8.2 RBK responsibilities and requirements	29
4.8.3 Evidence base.....	29
4.8.4 Climate action project list	30
4.9 TRANSPORT	32
4.9.1 Introduction.....	32
4.9.2 RBK responsibilities and requirements	32
4.9.3 Evidence base.....	32
4.9.4 Transport project list.....	33
4.10 FLOOD RESILIENCE	50
4.10.1 Introduction.....	50
4.10.2 RBK responsibilities and requirements	50
4.10.3 Evidence base	50
4.10.4 Flood resilience project list.....	51
4.11 HOUSING AND PROPERTY	52
4.11.1 Introduction.....	52
4.11.2 RBK responsibilities and requirements	52
4.11.3 Evidence base	52
4.11.4 Housing and property project list	53

1. INTRODUCTION

1.1 Purpose of this IDP

The Royal Borough of Kingston upon Thames has produced this Infrastructure Delivery Plan (IDP) to support the Council's emerging New Local Plan for the borough.

The IDP forms part of the Council's evidence base of the New Local Plan providing a summary of the infrastructure required for the borough, according to the level of development proposed to meet the borough's population and housing growth projections. Explicitly, this IDP seeks to provide an overview of:

- The key infrastructure projects needed over the New Local Plan period;
- The potential locations and development sites identified for their delivery;
- The estimated timing for delivery;
- The estimated costs and funding in place or their delivery;
- The delivery mechanisms and governance structure;
- Potential funding sources.

*Note this is not an exhaustive list

This IDP aims to help support a collaborative approach with relevant infrastructure and service partners to the planning of infrastructure requirements as part of the Local Plan process. Information gathered for this IDP will help inform the preparation of the Council's Infrastructure Funding Statement, which will set out how developer funding will be prioritised alongside other sources of funding to support infrastructure delivery in the borough.

1.2 Overview of Planning Policy

National Planning Policy Framework

The National Planning Policy Framework (MHCLG 2019) requires all Local Plans to be prepared with the objective of contributing to the achievement of sustainable development.

In particular, when preparing new Local Plans, the framework expects policy-making authorities to work with relevant infrastructure providers to determine where additional infrastructure is required, and for planning policies to make sufficient provision for infrastructure.

Paragraph 16 of the NPPF:

- *'Plans should ... be shaped by early, proportionate and effective engagement between plan-makers and communities, local organisations, businesses, infrastructure providers and operators and statutory consultees.'*

Paragraph 20 of the NPPF:

'Strategic policies should ... make sufficient provision for:

- a) infrastructure for transport, telecommunications, security, waste management, water supply, wastewater, flood risk and coastal change management, and the provision of minerals and energy;*
- b) community facilities (such as health, education and cultural infrastructure); and*
- c) conservation and enhancement of the natural, built, and historic environment, including landscapes and green infrastructure.'*

The Mayor's London Plan

The Mayor of London's London Plan (GLA 2019) forms part of the Development Plan for boroughs in

London. Local Plans are required to be in general conformity with strategic policies in the London Plan. In planning for London's growth, the London Plan recommend boroughs should assess the capacity of existing and planned infrastructure to support the required level of growth in their area and identify infrastructure requirements in local infrastructure delivery plans or programmes.

Paragraph 3.2.1 of the London Plan:

'... Infrastructure capacity, having regard to the growth identified in the Development Plan, should be identified in the borough's infrastructure delivery plans or programmes ...'

The London Plan expects boroughs to work with infrastructure providers to consider the cumulative demands from developments and ensure that sufficient capacity will exist at the approach time.

There are also emphasises on boroughs to engage with local communities and stakeholders at an early stage and to plan for the infrastructure necessary along identified Growth Corridors and Opportunity Areas following an 'area-based approach' where appropriate.

1.3 Duty to Cooperate

The Localism Act 2011 and subsequent regulations place a statutory duty on local planning authorities to engage and work effectively with other prescribed bodies when addressing relevant strategic matters. These matters include the planning of infrastructure that may have cross-boundary requirements or implications.

The infrastructure of strategic importance for the Greater London areas is planned for by the London Mayor (through its London Plan). The Council has and will continue to work positively with the Mayor and other local planning authorities to identify and address the matters of strategic importance as part of the New Local Plan process.

Statements of Common Ground will be prepared to provide information on relevant strategic issues for the area, and the outcomes from any joint-working activities.

Infrastructure covered by this IDP*

The infrastructure types and categories included by this IDP are:

- Education
- Sport, community and leisure
- Healthcare
- Green Infrastructure
- Waste
- Regeneration
- Climate action
- Transport
- Flood resilience
- Housing & Property

*Note this is not an exhaustive list.

Please note, that the IDP does not seek to identify every item of infrastructure that may be required or would come forward over the Local Plan period.

This IDP has focused on infrastructure with tangible implications for the Local Plan process (e.g., projects that require safeguarding or policy allocation in the Local Plan, and projects with a projected 'funding gap' and will likely require developer funding to support their delivery).

1.4 Approach to this IDP

This IDP considers relevant requirements set out in the National Planning Policy Framework and the Mayor of London's London Plan.

For most of the infrastructure covered by this IDP, providers already have established processes for identifying infrastructure requirements, with service strategies and related capital programmes providing information on existing and planned capacity and future infrastructure requirements for the borough. To inform this IDP, the Council has consulted with various infrastructure providers (between Q1-Q3 of 2022) to identify any related infrastructure planning issues and the infrastructure projects required over the New Local Plan period.

The infrastructure providers and service partners that contributed to this IDP include:

- Achieving for Children
- London Healthy Urban Development Unit
- NHS SWL Clinical Commissioning Group
- RB Kingston, Corporate & Communities
- RB Kingston, Highways & Transport
- RB Kingston, Regeneration, Recovery, Employment, Skills and Enterprise
- RB Kingston, Culture and Heritage
- RB Kingston, Major projects
- RB Kingston, Property
- RB Kingston, Strategic Planning

The preparation of this IDP had two broad stages:

Stage 1: Information gathering & initial review (January – February 2022)

The first stage is primarily a desktop review including a review of all existing baseline documents in order to identify what infrastructure

evidence currently exists and gaps that require addressing for the preparation of an updated IDP. Note that this IDP document builds on a draft IDP produced in December 2020.

Stage 2: Further Engagement (Dates TBC) (February – June 2022)

The second stage involved working with partners and providers to review and refine the information gathered in Stage 1, including follow-up discussions to narrow down the list of relevant IDP projects

For this IDP, infrastructure projects have been classified into one of the following categories to reflect their relative importance for enabling new residential developments and achieving sustainable communities:

Critical Infrastructure:	<i>Critical for meeting primary existing unmet development needs and for enabling the primary development objectives set out within the Council's Local Plan (and wider planning Policy) to be met.</i>
Essential Infrastructure:	<i>Essential for meeting secondary existing unmet development needs and for enabling secondary development objectives set out within the Council's Local Plan (and wider planning Policy) to be met.</i>
Important Infrastructure:	<i>Important for meeting other existing unmet development needs and for enabling other development objectives set out within the Council's Local Plan</i>

(and wider planning Policy) to be met.

Primary development needs/objectives refer to infrastructure that meets primary human needs, such as employment, core health and care facilities, housing, core educational facilities and vital (sustainable) transport facilities.

Secondary development needs/objectives refer to infrastructure that meets secondary human needs, such as community facilities, sport and leisure facilities, sustainable travel facilities, higher/other educational facilities, flood mitigation/prevention etc

Other development needs/objectives refer to infrastructure that meets other important human needs, such as public spaces, cultural facilities, heritage assets, landscaped parks/gardens, biodiversity enhancement etc etc.

Prioritisation within the IDP document also takes into consideration the status of the evidence documentation used to demonstrate any unmet and/or future needs (such as age, adoption status etc). Additionally, it is noted that some projects may meet several different unmet developments needs and/or policy objectives and so may be prioritised higher as a result.

Aligning with the New Local Plan period (between 2019 and 2041), infrastructure requirements in this IDP have been organised into the following periods:

- **Ongoing:** Infrastructure projects that have already kick-started
- **Immediate:** Infrastructure projects that are due to commence within 1 year

- **Short-term:** Infrastructure projects that are due to commence within 2-5 years
- **Medium-term:** Infrastructure projects that are due to commence within 6-10 years
- **Long-term:** Infrastructure projects that are due to commence within 11+ years

The Council will seek to review this IDP periodically with infrastructure providers and service partners to ensure it reflects the most up-to-date information. It is recognised that requirements for infrastructure will evolve over time, as such the Council will continue to refine and amend this IDP on an annual basis.

1.5 Limitations of this IDP

The planning of infrastructure is complex involving a wide range of organisations and bodies, working to different timescales and delivery objectives. While the Council has taken care to ensure the information included in this document is accurate and correct at the time of writing, the information in this IDP is subject to change.

This IDP does not in any way commit the Council or providers to the funding or delivery of infrastructure identified in this document.

This IDP has been prepared at a level of detail required to support plan-making only. Additional assessments may be required to determine the precise nature of any provision and options for its funding and delivery.

2. DEVELOPMENT GROWTH

2.1 The London Plan

Under the London Plan, the borough has a target to increase its housing by over 9,640 units between 1 April 2019 and 31 March 2029.

The areas in the borough that are expected to see the most significant growth includes Kingston town centre, Norbiton (Cambridge Road Estate), and the centres of New Malden and Tolworth.

The future arrival of Crossrail 2 is also expected to unlock additional growth opportunities with selective redevelopment of land in and around Berrylands Station, Hogsmill Valley and Chessington.

The Council's emerging New Local Plan will identify sites and broad locations for housing development over the ten-year target period.

2.2 Housing Developments

Under the London Plan, the borough has a target to increase its housing by over 9,640 units between 1 April 2019 and 31 March 2029. The areas in the borough that are expected to see the most significant growth include Kingston town centre, Norbiton (Cambridge Road Estate), and the centres of New Malden and Tolworth. The future arrival of Crossrail 2 is also expected to unlock additional growth opportunities in and around Berrylands Station, Hogsmill Valley and Chessington.

The table below provides an estimate of RBK's latest housing supply:

		FY2019/20 to FY2028/29
Large Sites	Completed FY2019/20	624
	Completed FY2020/21	479
	Pipeline Supply, incl. NSC	2,219
	Potential Supply (Design-Led Large Sites)	2,050
	Other Large Sites (Pending Applications, Appeal)	2,392
Small Sites	Pipeline Supply, incl. NSC	912
	Windfall Allowance	888
Total		9,564

Note: The figures above are subject to change based on planning application submission and outcome

2.3 Employment Developments

The future demand for offices is anticipated to be focused on town centres and within existing office clusters.

The London Plan identifies Kingston as having the demand and viability to accommodate new offices. It also identifies New Malden, Surbiton and Tolworth as having demand for office functions (but generally within smaller units).

The borough has two designated Strategic Industrial Locations providing land and premises for industrial functions - Barwell Business Park and Chessington Industrial Estate. The borough also has a number of designated Locally Significant Industrial Sites, and non-designated sites containing existing industrial and business uses.

To meet the future demand for industrial and related services, the London Plan expects the borough to manage and where necessary intensify existing industrial sites with no net loss in industrial capacity.

2.4 Population Change

Based on the latest housing-led population growth projections, RBK's population is projected to grow by up to 25,000 persons over the next twenty-year period. By 2032, the borough's population will reach over 193,130 persons (i.e., a 7% increase in the 2022 population of 178,960 persons).

By 2032, the greatest growth is projected to be in the 65 or over age group, where the population is expected to increase by up to 29%. In contrast the number of children of primary and secondary age are projected to drop well below the current figures. Detailed housing led population projections are listed below (GLA, 2021):

Age Group	% Change Identified Capacity Scenario	% Change Past Delivery Scenario	%Change Housing Target Scenario
0 to 3	-4.22%	-12.20%	-4.11%
4 to 10	-18.31%	-22.66%	-17.97%
11 to 15	-10.49%	-13.30%	-10.32%
16 to 17	5.04%	2.14%	5.04%
18 to 64	8.40%	1.80%	8.34%
65 and over	28.94%	26.33%	29.01%

3. DELIVERING INFRASTRUCTURE PROJECTS

3.1 Bidding process and funding allocation

As noted in Section 1 of the document, this IDP provides the initial (and preliminary) prioritisation list for infrastructure projects put forward by the relevant public sector delivery agencies. It is designed to identify key infrastructure priorities necessary to deliver the Local Plan. It also provides guidance to decision makers in the allocation of Developer Contributions (such as S106 and CIL). Full details on how the IDP feeds into the Council's adopted process and how the Council seeks to deliver these projects are available on our [website](#).¹

¹ <https://www.kingston.gov.uk/infrastructure-planning-delivery/delivering-infrastructure-projects>

4. IDP PROJECT PRIORITISATION LIST

4.1 Overview

The next section provides the prioritisation list for infrastructure projects put forward by the relevant public sector delivery agencies. These are grouped/organised together by subject/service area, as indicated below:

- Education
- Sport, Community and Leisure
- Healthcare
- Green Infrastructure
- Waste
- Regeneration
- Climate Action
- Transport
- Flood resilience
- Housing and Property

4.2 Education

4.2.1 Introduction

The section covers all educational-based infrastructure, including primary and secondary schools, higher education institutions, youth and social/community centres where the main purpose is education (note some overlap with healthcare section).

4.2.2 RBK responsibilities and requirements

The Council, as Local Education Authority, has a legal responsibility to ensure that there are sufficient school places in the Borough for all children who need a school place. The Council coordinates with adjoining authorities to estimate the needs for education infrastructure.

4.2.3 Evidence base

The evidence base used to identify the need for the projects which follow is set out below:

- RBK School Place Planning Strategy (2020)
- Childrens Centre Strategy
- Childrens Social Care Sufficiency Strategy
- Youth Centre Strategy

Note: The IDP does not seek to examine the robustness of the evidence base(s) noted above.



4.2.4 Education project list

Category	Source	Classification	Project Name	Proposed Location	Timing of Requirement	Delivery Mechanism & Governance arrangements	Estimated Cost (£M)	Potential Funding
Primary education	RBK School Place Planning Strategy 2020	Essential Infrastructure	Expansion of Surbiton Children's Centre Nursery (Surbiton Hill Nursery)	Alpha Road, Surbiton	Immediate	RBK capital project	0.1	High Needs Capital grant
Primary education	RBK School Place Planning Strategy 2020	Critical Infrastructure	New 2 FE Primary Academy, Surbiton Primary Academy	King Charles Centre, Surbiton	Immediate	ESFA free schools programme	N/A	DfE FSP
Primary education	RBK School Place Planning Strategy 2020	Critical Infrastructure	Expansion of Knollmead Primary School by 1 FE	Knollmead Primary School (Area 5 Tolworth & Berrylands)	Medium-term	RBK capital project	5-7	Basic Need: TBC
Primary education	RBK School Place Planning Strategy 2020	Essential Infrastructure	Potential requirement for a new primary school or primary places in the North Kingston area	TBC (Area 1 North Kingston; Area 2 Kingston Town and Norbiton)	Long-term	TBC	TBC	Basic Need: TBC
Primary education	RBK School Place Planning Strategy 2020	Critical Infrastructure	Potential expansion of Burlington Infant School	Burlington Infant School, Burlington Road (Area 6 New Malden & Coombe)	Short-term	RBK capital project	TBC	Basic Need: TBC
Primary education		Critical Infrastructure	Potential expansion of	Burlington Junior School,	Short-term	RBK capital project -	14	

	RBK School Place Planning Strategy 2020		Burlington Junior School	Burlington Road (Area 6 New Malden & Coombe)		already being delivered		Basic Need; preferential-rate borrowing
Primary education	IDP engagement (AfC)	Essential Infrastructure	Maintenance projects for Council-maintained and Foundation primary schools and Malden Oaks	TBC	TBC	Some would be delivered by RBK; others procured and managed by the schools themselves	TBC	Basic Need
Secondary education	RBK School Place Planning Strategy 2020	Critical Infrastructure	New Diocese of Southwark Church of England Secondary School	RBK-owned land between Hampden Road and Kingsmeadow Stadium Car Park	Short-term	ESFA project	N/A	DfE FSP (for 90% of capital costs)
Secondary education	RBK School Place Planning Strategy 2020	Important Infrastructure	Temporary expansions of existing secondary schools	Schools to be identified	Immediate	RBK capital project	TBC	Basic Need: TBC
Secondary education	RBK School Place Planning Strategy 2020	Important Infrastructure	Potential requirement for a new secondary school or secondary places within the borough	TBC (Area 1 North Kingston; Area 2 Kingston Town and Norbiton)	Long-term	ESFA project	TBC	Basic Need: TBC
Specialist Education (SEND)	RBK School Place Planning Strategy 2020	Critical Infrastructure	Malden Oaks Post-16 SEMH specialist resource provision	Malden Oaks School, Duke's Centre, Dukes Avenue, Ham	Immediate	RBK capital project	0.5	Special Provision Capital Fund and High Needs Capital (ESFA Grant)
Specialist Education (SEND)	RBK School Place Planning Strategy 2020	Critical Infrastructure	Additional centres of Dysart special school (and St Philip's special school)	Star Centre; and site for secondary centre	Short-term	RBK capital project	TBC	Special Provision Capital Fund (ESRA Grant)

Specialist Education (SEND)	RBK School Place Planning Strategy 2020	Essential Infrastructure	Willow at St Philip's	St Philip's School, Harrow Close, Chessington	Short-term	RBK capital project	TBC	Special Provision Capital Fund (ESRA Grant)
Specialist Education (SEND)	RBK School Place Planning Strategy 2020	Critical Infrastructure	Spring School	Part of Moor Lane Centre site, Moor Lane, Chessington	Immediate	ESFA project	TBC	DfE FSP
Specialist Education (SEND)	RBK School Place Planning Strategy 2020	Essential Infrastructure	New 16-25 Campus for Special Schools	TBC	Medium-term	OHCAT responsible for delivery	TBC	High Needs Capital grant of £3.6m
Specialist Education (SEND)	RBK School Place Planning Strategy 2020	Essential Infrastructure	New 'Cullum Centre' SRP at The Kingston Academy	The Kingston Academy, Richmond Road, Kingston	Short-term	RBK capital project (TBC)	2.5	High Needs Capital (ESFA grant) and £1m from National Autistic Society
Specialist Education (SEND)	RBK School Place Planning Strategy 2020	Important Infrastructure	Alternative provision vocational centre for KS2 and KS3	Former Barnfield Youth Centre, Parkfield Road, Kingston	Medium-term	RBK capital project	TBC	0.5
Children's centres and youth centres	Children's Centre Strategy	Essential Infrastructure	Chessington Childrens Centre	Buckland Road, Chessington	TBC	RBK capital project	TBC	TBC
Children's centres and youth centres	Children's Centre Strategy	Essential Infrastructure	Kingston Town Children's Centre	Villiers Road, Kingston	TBC	RBK capital project	TBC	TBC
Children's centres and youth centres	Children's Centre Strategy	Essential Infrastructure	Kingsnympton Children's Centre	Kingsnympton Park, Kingston Hill	TBC	RBK capital project	TBC	TBC
Children's centres and youth centres	Children's Centre Strategy	Essential Infrastructure	Old Malden Children's Centre	Lawrence Avenue, Malden Manor	TBC	RBK capital project	TBC	TBC
Children's centres and youth centres	Children's Centre Strategy	Essential Infrastructure	Tolworth Children's Centre	School Lane, Tolworth	Immediate	RBK capital project	0.6	TBC
Children's centres and youth centres	Youth Service Strategy - presented to ECSC 15/03/22	Essential Infrastructure	Dickerage Sport and Community Centre	Dickerage Lane, New Malden	TBC	RBK capital project	TBC	TBC

Children's Social Care	Children's Social Care Sufficiency Strategy	Important Infrastructure	HOST 3 (formerly known as Green Leas 2)	No building identified as yet.	Immediate	RBK capital project	TBC	TBC
Children's Social Care	Children's Social Care Sufficiency Strategy	Critical Infrastructure	Children's Home	A potential building has been identified at Chamberlain Way in Surbiton.	Immediate	RBK capital project	TBC	TBC

4.3 Sport, community, and leisure

4.3.1 Introduction

This section covers all sport, community, and leisure infrastructure which require maintenance and improvements works to support positive impacts on the health and wellbeing of local communities.

4.3.2 RBK responsibilities and requirements

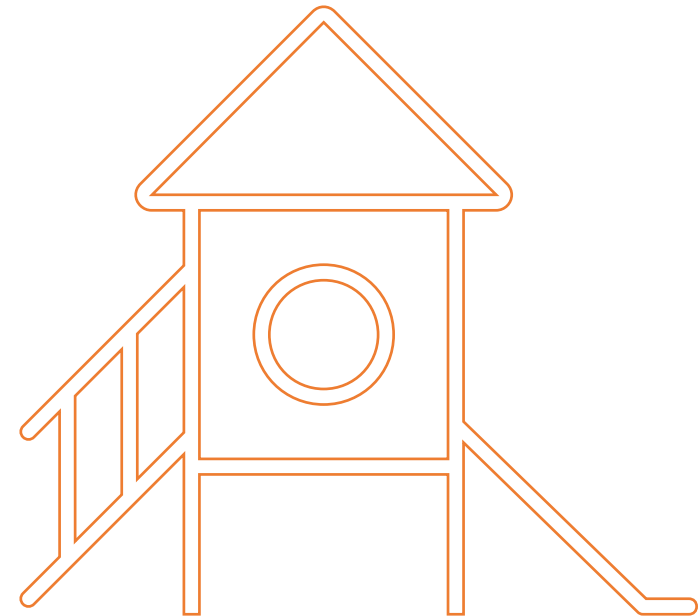
The ambition of the borough is to improve the quality of the local sports, community, and leisure spaces to support the health and wellbeing of residents and visitors, support healthier lifestyles through enhanced accessibility to open spaces, recreation and play facilities, and promote social inclusion, and the reduction of inequalities in the borough.

4.3.3 Evidence base

The evidence base used to identify the need for the projects which follow is set out below:

- RBK Leisure Strategy Refresh 2020
- RBK Community Parks Programme 2020-24
- RBK Greenspace Strategy 2021-31
- RBK Allotment Strategy 2021-31

Note: The IDP does not seek to examine the robustness of the evidence base(s) noted above.



4.3.4 Sport community and leisure project list

Category	Source	Classification	Project Name	Proposed Location	Timing of Requirement	Delivery Mechanism & Governance arrangements	Estimated Cost (£M)	Potential Funding
Sports and leisure facilities	RBK Leisure Strategy Refresh 2020	Essential Infrastructure	Kingston Leisure Centre Replacement Facility	Kingfisher Centre, part of Cattle Market site	Medium-term	TBC	TBC	TBC
Sports, Community and Leisure	RBK Leisure Strategy Refresh 2020	Essential Infrastructure	The Malden Centre Replacement Facility	The Malden Centre, part of Cocks Crescent site	Medium-term	TBC	TBC	TBC
Sports and leisure facilities	RBK Leisure Strategy Refresh 2020	Essential Infrastructure	New leisure facility at Chessington	TBC – south of the borough	Long-term	TBC	TBC	TBC
Sports and leisure facilities	RBK Leisure Strategy Refresh 2020	Important Infrastructure	Improvements to facilities at Weir Archer Athletics and Fitness Centre	Weir Archer A&F Centre	TBC	TBC	TBC	TBC
Recreational Grounds and Children's Play Areas	RBK Community Parks Programme 2020-24	Important Infrastructure	Neighbourhood Play Provision – Small Sites	Pear Tree Close, Donald Wood Gardens and England Way	Short-term	TBC	0.15	Capital Allocation: £25k
Recreational Grounds and Children's Play Areas	RBK Community Parks Programme 2020-24	Important Infrastructure	Major refurbishment of play areas at Blagdon Road Open Space	Blagdon Road Open Space, New Malden	Immediate	TBC	0.2	Capital Allocation: £100k
Recreational Grounds and Children's Play Areas	RBK Community Parks Programme 2020-24	Important Infrastructure	Enhancement of Kingfisher Playground	Kingfisher Playground	Immediate	TBC	0.1	Capital Allocation: £75k
Recreational Grounds and Children's Play Areas	IDP engagement (RBK Corporate & Communities)	Important Infrastructure	Installation of 3G pitch at King George V Playing Fields	King George V Playing Field, Tolworth	Short-term	TBC	1	Grant Funding: £400k
Recreational Grounds and Children's Play Areas	RBK Greenspace Strategy 2021-31	Important Infrastructure	Improvement works at Elm Road Recreation Ground	Elm Road Recreation Ground	Short-term	TBC	0.12	Grant Funding: £10k
Recreational Grounds and	RBK Greenspace Strategy 2021-31	Important Infrastructure	Community building at Victoria Recreation Ground	Victoria Recreation Ground	Short-term	TBC	0.6	Grant Funding: £100k

Children's Play Areas								
Recreational Grounds and Children's Play Areas	IDP engagement (RBK Corporate & Communities)	Important Infrastructure	Installation of children's play area at Dickerage Road Open Space	Dickerage Road Open Space	Short-term	TBC	0.2	Capital Allocation: £50k
Recreational Grounds and Children's Play Areas	RBK Greenspace Strategy 2021-31	Important Infrastructure	Programme to modernise existing recreational and ancillary buildings and toilet blocks	TBC	Ongoing	TBC	10	Grant Funding: £2 million
Food Growing	RBK Allotment Strategy 2021-31	Important Infrastructure	Improvement works to existing allotments	Council managed allotments	Ongoing	TBC	0.4	Capital Allocation: £40k
Food Growing	RBK Allotment Strategy 2021-31	Important Infrastructure	Community Food Growing	Community managed sites (TBC - 14 locations)	Ongoing	TBC	0.7	Capital Allocation: TBC

4.4 Healthcare

4.4.1 Introduction

Health facilities include hospitals, primary care facilities, wellbeing and mental health facilities.

4.4.2 RBK responsibilities and requirements

The ambition of the borough is to support NHS in its efforts to increase the emphasis on prevention and maintaining good health, moving elements of hospital care out of hospitals and into the community, and delivering primary care at scale.

4.4.3 Evidence base

The evidence base used to identify the need for the projects which follow is set out below:

- 2019/20 Estate Strategy

Note: The IDP does not seek to examine the robustness of the evidence base noted above. Further reference includes IDP engagement (SWCCG Estate Broad and RBK Public Health).



4.4.4 Healthcare project list

Category	Source	Classification	Project Name	Proposed Location	Timing of Requirement	Delivery Mechanism & Governance arrangements	Estimated Cost (£M)	Potential Funding
Healthcare facilities	IDP engagement (SWCCG Estate Board)	Critical Infrastructure	Cambridge Road Estate - new primary care health facility as part of the regeneration of the estate	Cambridge Road Estate (CRE) site	Medium-term	TBC	TBC	NHS; S106/CIL
Healthcare facilities	IDP engagement (SWCCG Estate Board)	Essential Infrastructure	Gosbury Hill Health Centre	TBC	Short-term	TBC	TBC	NHS; NHSPS/ICS Capital Recycling S106/CIL
Healthcare facilities	IDP engagement (SWCCG Estate Board)	Essential Infrastructure	New healthcare premises in Tolworth	TBC	Medium-term	TBC	TBC	NHS; S106/CIL
Healthcare facilities	IDP engagement (SWCCG Estate Board)	Critical Infrastructure	Redevelopment of Tolworth Hospital	Tolworth Hospital	Short-term	TBC	88	To be funded through the sales of surplus land
Healthcare facilities	TBC	Important Infrastructure	Kingston Hospital Foundation Trust Masterplan	Kingston Hospital	Short-term	TBC	TBC	NHS
Healthcare facilities	IDP engagement (SWCCG Estate Board); 2019/20 Estate Strategy	Essential Infrastructure	Primary Care Networks - estate investment	Borough-wide	Medium-term	TBC	TBC	NHS; S106/CIL

Health and Wellbeing projects	IDP engagement (RBK Public Health)	Important Infrastructure	Projects to address health inequalities and to promote better health and mental wellbeing for the population. Includes substance misuse services, given the increasing need driven by an increase in population.	TBC	Ongoing	TBC	TBC	TBC
Other projects	TBC	Important Infrastructure	Relocation of Kingston Wellbeing Service (KWS-Substance Misuse Service)	TBC	Immediate	Joint work with CCG and health services, joint program board	TBC	TBC

4.5 Green infrastructure

4.5.1 Introduction

Green infrastructure refers to the network of multi-functional green spaces and features vital to the sustainability of our natural environment. Green spaces across the borough require a programme of infrastructure maintenance and improvement works to ensure their long-term sustainability and support positive impacts on the health and wellbeing of locals and visitors, as well as valuable habitat for local flora and fauna.

4.5.2 RBK responsibilities and requirements

The Council aims to manage and develop its parks and greenspaces across the borough to ensure sustainable, diverse and accessible use by our current residents and visitors as well as the increased numbers of individuals through the forecasted population growth in Kingston.

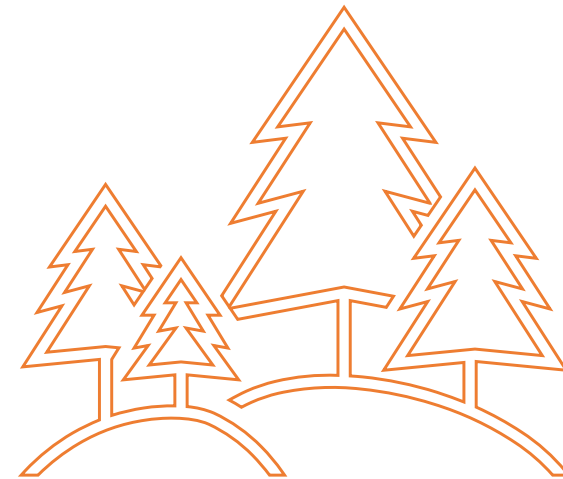
4.5.3 Evidence base

The evidence base used to identify the need for the projects which follow is set out below:

- RBK Community Parks Programme 2020-24
- RBK Greenspaces Strategy 2021-31
- RBK Climate Change Action Plan
- ALGG Opportunity Project

- RBK Biodiversity Action Plan 2021-31

Note: The IDP does not seek to examine the robustness of the evidence base(s) noted above.



4.5.4 Green infrastructure project list

Category	Source	Classification	Project Name	Proposed Location	Timing of Requirement	Delivery Mechanism & Governance arrangements	Estimated Cost (£M)	Potential Funding
Parks, Green Spaces and Tree Planting	RBK Community Parks Programme 2020-24	Important Infrastructure	Canbury Gardens Masterplanning	Canbury Gardens	Medium-term	TBC	TBC	Capital Allocation: £100k Grant Funding: TBC
Parks, Green Spaces and Tree Planting	RBK Community Parks Programme 2020-24	Important Infrastructure	Eagle Brewery Wharf – improvement works	Eagle Brewery Wharf	Immediate	TBC	TBC	Capital Allocation: £30k Grant Funding: TBC
Parks, Green Spaces and Tree Planting	RBK Community Parks Programme 2020-24	Important Infrastructure	Fishponds Park – restoration works and enhancements	Fishponds Park	Immediate	TBC	0.8	Capital Allocation: £100k Grant Funding: £100k
Parks, Green Spaces and Tree Planting	RBK Community Parks Programme 2020-24	Important Infrastructure	Latchmere Recreation Ground – improvement works	Latchmere Recreation Ground	Immediate	TBC	TBC	Capital Allocation: £30k Grant Funding: TBC
Parks, Green Spaces and Tree Planting	RBK Community Parks Programme 2020-24	Important Infrastructure	Queens Promenade – Pocket Park Project	Queens Promenade Pocket Park	Immediate	TBC	0.15	Capital Allocation: £50k
Parks, Green Spaces and Tree Planting	RBK Greenspaces Strategy 2021-31	Important Infrastructure	Six Acre Meadow – new footpath and reinstatement of boardwalk	Six Acre Meadow	Immediate	TBC	0.1	Capital Allocation: £5k Neighbourhood CIL: £5k
Parks, Green Spaces and Tree Planting	RBK Greenspaces Strategy 2021-31	Important Infrastructure	Raeburn Open Space LNR - wheelchair accessible footpath and boardwalk	Raeburn Local Nature Reserve	Immediate	TBC	0.115	Capital Allocation: £15k

Parks, Green Spaces and Tree Planting	RBK Greenspace Strategy 2021-31	Important Infrastructure	Parks and greenspaces – infrastructure improvement works	TBC	Ongoing	TBC	2	Capital Allocation: £500k
Tree Planting	RBK Climate Change Action Plan	Important Infrastructure	Climate Change Action Plan – tree planting	TBC	Ongoing	TBC	0.75	TBC
Nature Conservation and Biodiversity	ALGG Opportunity Project	Important Infrastructure	Nature Enhancement Plan: Tolworth Court Farm & MM	Tolworth Court Farm & Moated Manor	Immediate	TBC	0.1	TBC
Nature Conservation and Biodiversity	IDP engagement (RBK Corporate & Communities)	Important Infrastructure	Nature Enhancement Plan: Tolworth Court Farm & FF	Tolworth Court Farm & Farm Fields	Immediate	TBC	2.5	Capital Allocation: £500k
Nature Conservation and Biodiversity	ALGG Opportunity Project	Important Infrastructure	Nature Enhancement Plan: Elmbridge Meadows	Elmbridge Meadows (Hogsmill Valley)	Short-term	TBC	0.5	Capital Allocation: £50k
Nature Conservation and Biodiversity	ALGG Opportunity Project	Important Infrastructure	Nature Enhancement Plan: Six Acre Meadow	Six Acre Meadow	Short-term	TBC	0.5	Grant Funding: £50k
Nature Conservation and Biodiversity	ALGG Opportunity Project	Important Infrastructure	Nature Enhancement Plan: Knollmead Allotments	Knollmead Allotments	Immediate	TBC	0.01	Neighbourhood CIL: £2k
Nature Conservation and Biodiversity	IDP engagement (RBK Corporate & Communities)	Important Infrastructure	Nature Enhancement Plan: Southwood Local Nature Reserve	Southwood Local Nature Reserve	Medium-term	TBC	0.5	Grant Funding: £50k
Nature Conservation and Biodiversity	ALGG Opportunity Project	Important Infrastructure	Hogsmill Restoration, Phase 2 (Bonesgate Section)	Bonesgate River	Short-term	TBC	1	Grant Funding: £100k
Nature Conservation and Biodiversity	RBK Greenspace Strategy 2021-31	Important Infrastructure	Fishponds Wetland Restoration Plan	Fishponds Park	Immediate	TBC	0.2	Capital Allocation: £100k Commuted Sum from Thames Water: unknown value

Nature Conservation and Biodiversity	RBK Greenspaces Strategy 2021-31	Important Infrastructure	Richard Jefferies Bird Sanctuary – Nature Reserve Restoration	Richard Jeffries Bird Sanctuary	Immediate	TBC	0.075	TBC
Nature Conservation and Biodiversity	RBK Biodiversity Action Plan 2021-31	Important Infrastructure	Plough Pond Restoration	Plough Pond	Immediate	TBC	0.05	TBC
Nature Conservation and Biodiversity	RBK Biodiversity Action Plan 2021-31	Important Infrastructure	Hogsmill Valley Woodland Restoration	The Wood, Hogsmill Valley	Short-term	TBC	0.5	Grant Funding: £15k
Nature Conservation and Biodiversity	RBK Biodiversity Action Plan 2021-31	Important Infrastructure	Tolworth Brook Naturalisation	Raeburn Open Space & Edith Gardens Local Nature Reserve	Medium-term	TBC	1.5	Grant Funding: £200k
Nature Conservation and Biodiversity	RBK Biodiversity Action Plan 2021-31	Important Infrastructure	Jubilee Wood LNR and pond restoration	Jubilee Meadows LNR	Short-term	TBC	0.2	TBC
Nature Conservation and Biodiversity	RBK Biodiversity Action Plan 2021-31	Important Infrastructure	Coombe Wood LNR restoration	Coombe Wood LNR	Medium-term	TBC	0.02	TBC

4.6 Waste

4.6.1 Introduction

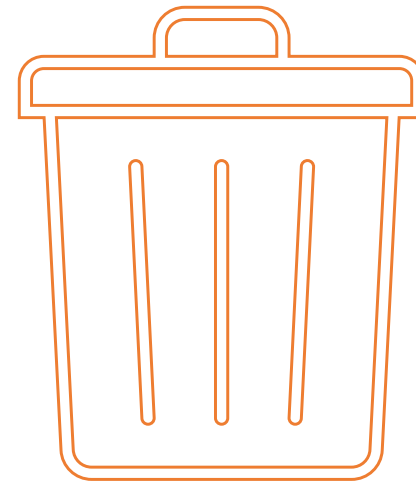
Maintenance and renewal of existing waste infrastructure and delivery of new infrastructure to support growth.

4.6.2 RBK responsibilities and requirements

The Council is committed to reducing the amount of waste produced in the borough and will ensure that recycling and waste management are fully considered with new development.

4.6.3 Evidence base

N/A



4.6.4 Waste project list

Category	Source	Classification	Project Name	Proposed Location	Timing of Requirement	Delivery Mechanism & Governance arrangements	Estimated Cost (£M)	Potential Funding
Waste	TBC	Important Infrastructure	Chapel Mill/Villiers Road - Waste Site	TBC	Medium-term	TBC	TBC	TBC

4.7 Regeneration

4.7.1 Introduction

Infrastructure required to support, protect, and enhance economic development and employment in the borough.

4.7.2 RBK responsibilities and requirements

The Council will promote the creation of a sustainable, diverse and balanced economy through:

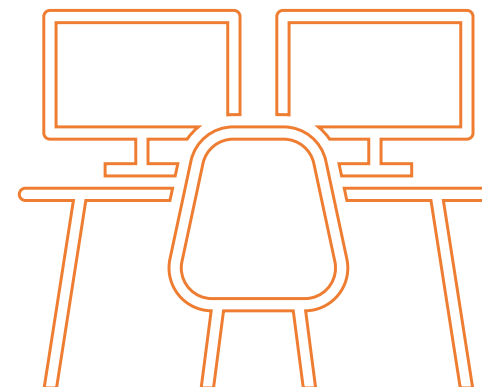
- Ensuring availability of a range of workspaces and unit sizes, start-up space, co-working space and 'grow-on' space by protecting existing floorspace and encouraging the provision of new floorspace - including to support the growth of the emerging green economy; and
- Working with affordable and shared workspace providers to bring forward affordable, flexible and shared workspace
- For major developments, maximising the opportunities for employment and skills both through construction and the final uses of the development
- Public realm improvements to stimulate high street recovery and renewal

4.7.3 Evidence base

The evidence base used to identify the need for the projects which follow is set out below:

- Employment land review
- Reimagining Kingston
- Mayor of London High Streets for All
- Culture 'Made in Kingston' Strategy;
- RBK Economic Growth and Development Strategy

Note: The IDP does not seek to examine the robustness of the evidence base(s) noted above.



4.7.4 Regeneration project list

Category	Source	Classification	Project Name	Proposed Location	Timing of Requirement	Delivery Mechanism & Governance arrangements	Estimated Cost (£M)	Potential Funding
Employment, Skills and Enterprise	Employment Land Review	Essential Infrastructure	Provision of flexible and affordable workspace	Kingston town centre (Sites TBC) and Surbiton, in line with ELR recommendations. Guildhall?	Short-term	TBC	2-3	£250,000 secured through S106 from Surrey House development
Town Centres and High Street	Reimagining Kingston ; Mayor of London High Streets for All ; RBK Economic Growth and Development Strategy; Culture 'Made in Kingston' Strategy;	Important Infrastructure	Kingston Riverside Regeneration	Kingston Riverside, Eagle Brewery Wharf	Short-term	TBC	2-4	TBC
Town Centres and High Street	Reimagining Kingston; Mayor of London High Streets for All	Important Infrastructure	Ancient Market House & Place	Ancient Market House & Place; Thames Street, Kings Passage, Emms Passage, Bishops Hall, Memorial Gardens	Short-term	TBC	3	TBC
Town Centres and High Street	Reimagining Kingston/ ; Mayor of London High Streets for All	Essential Infrastructure	Kingston Town Centre (KTC) Gateway	Richmond Rd, Kingston Station Forecourt, Cycle Hub & Old London Road	Short-term	TBC	2	TBC
Town Centres and High Street	Reimagining Kingston/ ; Mayor of London High Streets for All	Important Infrastructure	KTC: Clarence Street: Kingston Bridge to Old London Road	KTC: Clarence Street: Kingston Bridge to Old London Road	Short-term	TBC	2	TBC

Town Centres and High Street	Reimagining Kingston/ ; Mayor of London High Streets for All	Important Infrastructure	KTC: Night time Economy	Kingston Town Centre	Short-term	TBC	2	TBC
Town Centres and High Street	Culture ' Made in Kingston' Strategy; Mayor of London High Streets for All	Essential Infrastructure	New Malden Town Square, High Stret and Gateway (Fountain Roundabout)	New Malden Town Centre	Short-term	TBC	0.8	£120,000 (secured) GLA
Town Centres and High Street	Mayor of London High Streets for All	Important Infrastructure	Town Centre - High Street public realm decluttering	New Malden	Short-term	TBC	TBC	TBC
Town Centres and High Street	Culture ' Made in Kingston' Strategy; Mayor of London High Streets for All; RBK Economic Growth and Development Strategy	Important Infrastructure	Celebrating Kingston's Heritage - King Athelstan	Ancient Market Place/Ancient Market House & Borough Wide	Short-term	TBC	2	TBC via Historic England, National Lottery, Arts Council
Town Centres and High Street	Culture ' Made in Kingston' Strategy; Mayor of London High Streets for All; RBK Economic Growth and Development Strategy	Important Infrastructure	Celebrating Kingston's Heritage - King Athelstan	Kingston Town Centre	Medium-term	TBC	5	TBC via Historic England, National Lottery, Arts Council
Town Centres and High Street	RBK Economic Growth and Development Strategy; Inclusive Kingston; Mayor of London High Streets for All	Important Infrastructure	Town Centre - Business Skils, Mentoring & Capacity development	New Malden, Surbiton, Chessington, Tolworth	Short-term	TBC	0.3	TBC

4.8 Climate action

4.8.1 Introduction

Infrastructure works to support an environmentally sustainable development of the borough.

4.8.2 RBK responsibilities and requirements

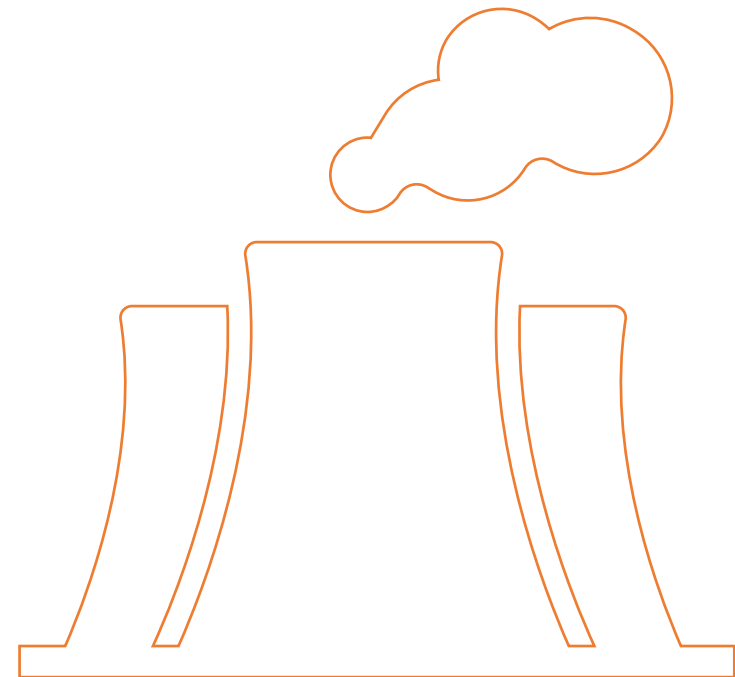
Kingston seeks to promote low carbon development that will help to slow the rate of and be resilient to the effects of climate change.

4.8.3 Evidence base

The evidence base used to identify the need for the projects which follow is set out below:

- RBK Energy Masterplan 2020
- RBK Climate Action Plan

Note: The IDP does not seek to examine the robustness of the evidence base(s) noted above.



4.8.4 Climate action project list

Category	Source	Classification	Project Name	Proposed Location	Timing of Requirement	Delivery Mechanism & Governance arrangements	Estimated Cost (£M)	Potential Funding
District Heating Networks	RBK Energy Masterplan 2020	Essential Infrastructure	DHN Cluster 1 – Kingston Town Centre	Kingston Town Centre area	TBC	TBC	11.6	Grant Funding: 20%; IRR over 30 years: 6.5
District Heating Networks	RBK Energy Masterplan 2020	Essential Infrastructure	DHN Cluster 2 – Cambridge Road Estate	CRE area	Immediate	TBC	7.2	Grant Funding: 40%; IRR over 30 years: 4.8%
District Heating Networks	RBK Energy Masterplan 2020	Essential Infrastructure	DHN Cluster 3 – Tolworth 2	Tolworth hospital and surrounding area	Immediate	TBC	2.5	IRR over 30 years: 5.5%
Buildings	RBK Climate Action Plan	Essential Infrastructure	Carbon Neutral Estate Bring the estate to carbon neutrality, by the target of 2030	Corporate Estate	Medium-term	TBC	10	TBC
Energy	RBK Climate Action Plan	Essential Infrastructure	Energy Management Install automatic metre readers across the Council's buildings and facilities to improve data on how we use energy. If needed and feasible install submetering and Building Management Systems.	Corporate Estate	Short-term	TBC	0.01-0.1	TBC

Energy	RBK Climate Action Plan	Essential Infrastructure	Decarbonise Our Heating Replace gas boilers in Council buildings with low or no carbon alternatives, using electric alternatives where we can. Increase the number of PV panels installations in corporate assets (including installations in schools) and work to support community installations.	Corporate Estate	Short-term	TBC	+0.5	TBC
Transport	RBK Climate Action Plan	Essential Infrastructure	Provide Pool Cars and Cycles for RBK Staff Deliver year on year investment in pool cars and bicycles for council staff.	Borough wide	TBC	TBC	TBC	TBC

4.9 Transport

4.9.1 Introduction

Infrastructure works to support walking and cycling, 'green routes', behaviour change, low carbon transport measures, highways & transport schemes, parking schemes, HGV management /intrusion, and bus priority.

4.9.2 RBK responsibilities and requirements

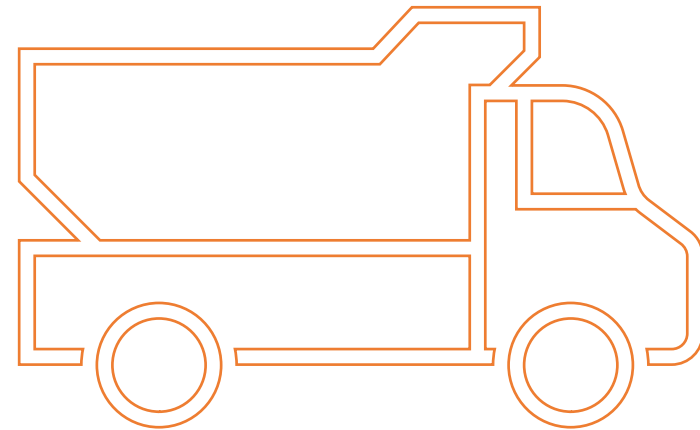
Kingston seeks to increase the modal share of public transport, through the multi-modal support of active travel which in turn will reduce the overall reliance on the private vehicle, reducing congestion and associated pollution.

4.9.3 Evidence base

The evidence base used to identify the need for the projects which follow is set out below:

- RBK Third Local Implementation Plan 2019
- Cycle Network Plan 2016
- Climate Change Action Plan
- RBK Electric Vehicle Strategy
- Borough Parking Review

Note: The IDP does not seek to examine the robustness of the evidence base(s) noted above.



4.9.4 Transport project list

Category	Source	Classification	Project Name	Proposed Location	Timing of Requirement	Delivery Mechanism & Governance arrangements	Estimated Cost (£M)	Potential Funding
Walking and cycling	RBK Third Local Implementation Plan 2019; Cycle Network Plan; Climate Change Action Plan	Essential Infrastructure	Go Cycle Programme	A240 Ewell Road Queens Road/ Park Road A2043 Cambridge Road/Kingston Rd A243 Brighton Rd/ Upper Brighton Rd / Hook Rd (TLRN overlap) A243 Leatherhead Road (TLRN overlap) A2043 Malden Road A307 Richmond Road Queens Road/ Park Road A238 Coombe Road/Coombe Lane West	Short-term	RBK delivery	9.66+	TfL; CIL; S106;
Walking and cycling	RBK Third Local Implementation Plan 2019; Cycle Network Plan; Climate Change Action Plan	Critical Infrastructure	Upper Brighton Rd A243/ Kingsdown Rd A3210 roundabout upgrade	Upper Brighton Rd/ Kingsdown Rd	Short-term	RBK delivery	TBC	TfL; CIL; S106;
Walking and cycling	RBK Third Local Implementation Plan 2019; Cycle Network Plan; Climate Change Action Plan	Essential Infrastructure	Fountain Roundabout	Fountain Roundabout - A2043/ B282 Burlington Road, B283 New Malden High Street	Short-term	RBK delivery	3	TfL; CIL; S106;

Walking and cycling	RBK Third Local Implementation Plan 2019; Cycle Network Plan; Climate Change Action Plan	Important Infrastructure	Burlington Road B282	Burlington Road B282	Short-term	RBK delivery	0.433	TfL; CIL; S106;
Walking and cycling	RBK Third Local Implementation Plan 2019; Cycle Network Plan; Climate Change Action Plan	Essential Infrastructure	Coombe Lane West zebra crossings	Coombe Lane West	Short-term	RBK delivery	TBC	TfL; CIL; S106;
Walking and cycling	RBK Third Local Implementation Plan 2019; Cycle Network Plan; Climate Change Action Plan	Essential Infrastructure	Surbiton Station access improvements & cycle links	Surbiton station forecourt, Station Approach, Victoria Road, roundabout outside station - Victoria Rd (B3370), St Marks Hill (B3370), Claremont Rd, St James Rd	Short-term	RBK delivery	TBC	TfL; CIL; S106;
Walking and cycling	RBK Third Local Implementation Plan 2019; Cycle Network Plan; Climate Change Action Plan	Essential Infrastructure	Jubilee Way Phase 2 works	Completion of works between the north end by LIDL HQ and the south section by K2 bus stops	Short-term	RBK delivery	0.09	TfL; CIL; S106;
Walking and cycling	RBK Third Local Implementation Plan 2019; Cycle Network Plan; Climate Change Action Plan	Essential Infrastructure	Kingston Bypass - Greenway extension Tolworth/A3 roundabout to Tolworth station (TfL scheme)	A240, Kingston Bypass, between Jubilee Way & A3 Tolworth Jct	Short-term	TfL delivery, RBK	0.082- 0.410	TfL; CIL; S106;

Walking and cycling	RBK Third Local Implementation Plan 2019; Cycle Network Plan; Climate Change Action Plan	Essential Infrastructure	Route 75 corridor	South Lane, South - Old Malden South Lane, North - New Malden Lower Marsh Lane South Lane/Thetford Rd roundabout Painters Estate, Old Malden Windsor Avenue	Short-term	RBK delivery	0.88+	TfL; CIL; S106;
Walking and cycling	RBK Third Local Implementation Plan 2019; Cycle Network Plan; Climate Change Action Plan	Essential Infrastructure	Motspur Park cycle facility	Motspur Park	Short-term	RBK delivery	0.683	TfL; CIL; S106;
Walking and cycling	RBK Third Local Implementation Plan 2019; Cycle Network Plan; Climate Change Action Plan	Essential Infrastructure	Sheephouse Way 'Greenway'	Sheephouse Way, New Malden	Short-term	RBK delivery	0.519	TfL; CIL; S106;
Walking and cycling	RBK Third Local Implementation Plan 2019; Cycle Network Plan; Climate Change Action Plan	Important Infrastructure	Malden Manor Roundabout	Malden Manor roundabout, Manor Drive North/ Sheephouse Way	Short-term	RBK delivery	0.74	TfL; CIL; S106;
Walking and cycling	RBK Third Local Implementation Plan 2019; Cycle Network Plan; Climate Change Action Plan	Essential Infrastructure	Amberwood Rise/ Malden Rd/ Motspur Park Rd junction improvement.	Amberwood Rise/ Malden Rd/ Motspur Park Rd junction improvement.	Short-term	RBK delivery	0.116	TfL; CIL; S106;
Walking and cycling	RBK Third Local Implementation Plan 2019; Cycle Network Plan; Climate Change Action Plan	Essential Infrastructure	Amberwood Rise	Amberwood Rise, Old Malden	Short-term	RBK delivery	0.064	TfL; CIL; S106;

Walking and cycling	RBK Third Local Implementation Plan 2019; Cycle Network Plan; Climate Change Action Plan	Essential Infrastructure	Cox Lane	Cox Lane, Chessington	Short-term	RBK delivery	0.539	TfL; CIL; S106;
Walking and cycling	RBK Third Local Implementation Plan 2019; Cycle Network Plan; Climate Change Action Plan	Essential Infrastructure	Clayton Road	Clayton Road, Chessington	Short-term	RBK delivery	0.067	TfL; CIL; S106;
Walking and cycling	RBK Third Local Implementation Plan 2019; Cycle Network Plan; Climate Change Action Plan	Essential Infrastructure	Woodstock Lane South	Woodstock Lane South, Chessington	Short-term	RBK delivery	TBC	TfL; CIL; S106;
Walking and cycling	RBK Third Local Implementation Plan 2019; Cycle Network Plan; Climate Change Action Plan	Essential Infrastructure	Bridge Road	Bridge Road, Chessington	Short-term	RBK delivery	0.194	TfL; CIL; S106;
Walking and cycling	RBK Third Local Implementation Plan 2019; Cycle Network Plan; Climate Change Action Plan	Essential Infrastructure	Ace of Spades/Hook Roundabout	Ace of spades roundabout - A243/A3	Short-term	RBK delivery	TBC	TfL; CIL; S106;
Walking and cycling	RBK Third Local Implementation Plan 2019; Cycle Network Plan; Climate Change Action Plan	Essential Infrastructure	Rushett Lane	Rushett Lane, B280, PROW Footpath Id FP28	Short-term	RBK delivery	0.175	TfL; CIL; S106;
Walking and cycling	RBK Third Local Implementation Plan 2019; Cycle Network Plan; Climate Change Action Plan	Essential Infrastructure	Fairoak Lane	Fairoak Lane, B280	Short-term	RBK delivery	TBC	TfL; CIL; S106;

Walking and cycling	RBK Third Local Implementation Plan 2019; Cycle Network Plan; Climate Change Action Plan	Essential Infrastructure	Love Lane	Love Lane, Surbiton	Short-term	RBK delivery	0.009	TfL; CIL; S106;
Walking and cycling	RBK Third Local Implementation Plan 2019; Cycle Network Plan; Climate Change Action Plan	Essential Infrastructure	Hook Rise North - TfL	Hook Rise North	Short-term	RBK delivery	0.109	TfL; CIL; S106;
Walking and cycling	RBK Third Local Implementation Plan 2019; Cycle Network Plan; Climate Change Action Plan	Essential Infrastructure	Kent Way	Kent Way	Short-term	RBK delivery	0.004	TfL; CIL; S106;
Walking and cycling	RBK Third Local Implementation Plan 2019; Cycle Network Plan; Climate Change Action Plan	Essential Infrastructure	Filby Road	Filby Road, Chessington	Short-term	RBK delivery	TBC	TfL; CIL; S106;
Walking and cycling	RBK Third Local Implementation Plan 2019; Cycle Network Plan; Climate Change Action Plan	Essential Infrastructure	Garrison Lane	Garrison Lane, Chessington	Short-term	RBK delivery	TBC	TfL; CIL; S106;
Walking and cycling	RBK Third Local Implementation Plan 2019; Cycle Network Plan; Climate Change Action Plan	Essential Infrastructure	Stokesby Road	Stokesby Road, Chessington	Short-term	RBK delivery	TBC	TfL; CIL; S106;
Walking and cycling	RBK Third Local Implementation Plan 2019; Cycle Network Plan; Climate Change Action Plan	Essential Infrastructure	Church Lane	Church Lane, Chessington	Short-term	RBK delivery	TBC	TfL; CIL; S106;

Walking and cycling	RBK Third Local Implementation Plan 2019; Cycle Network Plan; Climate Change Action Plan	Essential Infrastructure	Hook Parade signalised crossing Leatherhead Road TFL	Hook Parade / A243	Short-term	RBK delivery	TBC	TfL; CIL; S106;
Walking and cycling	RBK Third Local Implementation Plan 2019; Cycle Network Plan; Climate Change Action Plan	Essential Infrastructure	Kingston Bypass, Beverley Way Service Road to Robin Hood Lane Service Road	Kingston Bypass A3, Beverley Way Service Road to Robin Hood Lane Service Road	Short-term	RBK delivery	0.082	TfL; CIL; S106;
Walking and cycling	RBK Third Local Implementation Plan 2019; Cycle Network Plan; Climate Change Action Plan	Essential Infrastructure	Queen Elizabeth Road	Queen Elizabeth Road	Short-term	RBK delivery	0.023	TfL; CIL; S106;
Walking and cycling	RBK Third Local Implementation Plan 2019; Cycle Network Plan; Climate Change Action Plan	Essential Infrastructure	Kingston Hall Road	Kingston Hall Road, A307	Short-term	RBK delivery	0.087	TfL; CIL; S106;
Walking and cycling	RBK Third Local Implementation Plan 2019; Cycle Network Plan; Climate Change Action Plan	Essential Infrastructure	Clarence Street	Clarence Street	Short-term	RBK delivery	0.026	TfL; CIL; S106;
Walking and cycling	RBK Third Local Implementation Plan 2019; Cycle Network Plan; Climate Change Action Plan	Essential Infrastructure	Fairfield Rec cycle route	Fairfield Rec	Short-term	RBK delivery	0.016	TfL; CIL; S106;
Walking and cycling	KCC; RBK Third Local Implementation Plan 2019; Cycle Network Plan; Climate Change Action Plan	Essential Infrastructure	Skerne Road/ Down Hall Road	Skerne Road/ Down Hall Road	Short-term	RBK delivery	TBC	TfL; CIL; S106;

Walking and cycling	KCC; RBK Third Local Implementation Plan 2019; Cycle Network Plan; Climate Change Action Plan	Essential Infrastructure	Hook Rise South	Hook Rise South	Short-term	RBK delivery	TBC	TfL; CIL; S106;
Walking and cycling	KCC; RBK Third Local Implementation Plan 2019; Cycle Network Plan; Climate Change Action Plan	Essential Infrastructure	Villiers Road	Villiers Road	Short-term	RBK delivery	TBC	TfL; CIL; S106;
Walking and cycling	KCC; RBK Third Local Implementation Plan 2019; Cycle Network Plan; Climate Change Action Plan	Essential Infrastructure	Sury Basin	Sury Basin	Short-term	RBK delivery	TBC	TfL; CIL; S106;
Walking and cycling	KCC; RBK Third Local Implementation Plan 2019; Cycle Network Plan; Climate Change Action Plan	Essential Infrastructure	Gibbon Rd/Richmond Rd A307/ Sury Basin Jct - conversion to toucan	Gibbon Rd/Richmond Rd A307/ Sury Basin Jct	Short-term	RBK delivery	TBC	TfL; CIL; S106;
Walking and cycling	KCC; RBK Third Local Implementation Plan 2019; Cycle Network Plan; Climate Change Action Plan	Essential Infrastructure	Canbury Park Rd/A307/Sopwith Way	Canbury Park Rd/A307/Sopwith Way	Short-term	RBK delivery	TBC	TfL; CIL; S106;
Walking and cycling	RBK Third Local Implementation Plan 2019; Cycle Network Plan; Climate Change Action Plan	Essential Infrastructure	Park Road / Tudor Drive	Tudor Drive, North Kingston	Short-term	RBK delivery	2.174	TfL; CIL; S106;
Walking and cycling	KCC; RBK Third Local	Essential Infrastructure	Douglas Rd cyclist bypass	Douglas Road, Norbiton	Short-term	RBK delivery	TBC	TfL; CIL; S106;

	Implementation Plan 2019; Cycle Network Plan; Climate Change Action Plan							
Walking and cycling	KCC; RBK Third Local Implementation Plan 2019; Cycle Network Plan; Climate Change Action Plan	Essential Infrastructure	Blagdon Road contraflow	Blagdon Road outside Lidl to High St	Short-term	RBK delivery	TBC	TfL; CIL; S106;
Walking and cycling	KCC; RBK Third Local Implementation Plan 2019; Cycle Network Plan; Climate Change Action Plan	Essential Infrastructure	Bittoms/South Lane, Former Surrey CC HQ	Bittoms/South Lane, Former Surrey CC HQ	Short-term	RBK delivery; potential tie in with County Hall development	TBC	TfL; CIL; S106;
Walking and cycling	KCC; RBK Third Local Implementation Plan 2019; Cycle Network Plan; Climate Change Action Plan	Essential Infrastructure	Chatham Road	Chatham Road	Short-term	RBK delivery	TBC	TfL; CIL; S106;
Walking and cycling	KCC; RBK Third Local Implementation Plan 2019; Cycle Network Plan; Climate Change Action Plan	Essential Infrastructure	Kingswood Close to Oak Hill Crescent passage	Kingswood Close to Oak Hill Crescent	Short-term	RBK Delivery	TBC	TfL; CIL; S106;
Walking and cycling	KCC; RBK Third Local Implementation Plan 2019; Cycle Network Plan; Climate Change Action Plan	Essential Infrastructure	Old London Road cycle connections	Old London Road, A307/Clarence Street	Short-term	RBK Delivery;s278?	TBC	s278;s106;CIL
Walking and cycling	RBK Third Local Implementation Plan 2019; Cycle	Essential Infrastructure	Beeline route	Beeline Route - New Malden station to Raynes Park	Short-term	RBK;Thames Water	0.005	TfL; CIL; S106;

	Network Plan; Climate Change Action Plan							
Walking and cycling	RBK Third Local Implementation Plan 2019; Cycle Network Plan; Climate Change Action Plan	Essential Infrastructure	Cycle wayfinding	Boroughwide	Short-term	RBK / TFL delivery	TBC	TfL; CIL; S106;
Walking and cycling	RBK Third Local Implementation Plan 2019; Cycle Network Plan 2016; Climate Change Action Plan	Essential Infrastructure	Legible London Wayfinding - lockers	Boroughwide	Short-term	RBK / TFL delivery	TBC	TfL; CIL; S106;
Off-highway routes ('green routes')	RBK Third Local Implementation Plan 2019; Cycle Network Plan 2016; Climate Change Action Plan	Important Infrastructure	The Cut (Kingston Road to Elm Road)	The Cut (Kingston Road to Elm Road)	Short-term	RBK delivery	0.023	TfL; CIL;
Off-highway routes ('green routes')	RBK Third Local Implementation Plan 2019; Cycle Network Plan 2016; Climate Change Action Plan	Important Infrastructure	Barwell Lane	Barwell Lane, Chessington, Bridleway Id BW31	Short-term	RBK delivery	0.117	TfL; CIL;
Off-highway routes ('green routes')	RBK Third Local Implementation Plan 2019; Cycle Network Plan 2016; Climate Change Action Plan	Important Infrastructure	Cambridge Avenue	Footpath Id FP9	Short-term	RBK delivery	0.053	TfL; CIL;

Off-highway routes ('green routes')	RBK Third Local Implementation Plan 2019; Cycle Network Plan 2016; Climate Change Action Plan	Important Infrastructure	Hogsmill	Hogsmill 1 (Thames Bridge Path to South Park Grove) Hogsmill 3 (Green Lane Recreation Ground) Hogsmill 7 (Green Lane / Chalky Lane)	Short-term	RBK delivery	0.573	TfL; CIL;
Behaviour Change / Supporting Infrastructure / Low Carbon Transport measures	RBK Electric Vehicle Strategy; Climate Change Action Plan	Essential Infrastructure	Electric vehicle charging provision	Boroughwide various locations	Short-term	RBK delivery ; external suppliers	TBC	TfL, external grants; CIL
Behaviour Change / Supporting Infrastructure / Low Carbon Transport measures	RBK Electric Vehicle Strategy; Climate Change Action Plan	Essential Infrastructure	Ultra Rapid EV hubs	TBC	Short-term	RBK delivery ; external suppliers	TBC	TfL, external grants; CIL
Behaviour Change / Supporting Infrastructure / Low Carbon Transport measures	Climate Change Action Plan	Essential Infrastructure	Cargo Bike Deliveries for Businesses	Business hubs - New Malden, Kingston Town Centre, Hampden Rd Industrial Estate, Tolworth	Short-term	RBK delivery with external support	0.05	TfL, external grants; CIL
Behaviour Change / Supporting Infrastructure / Low Carbon Transport measures	RBK Third Local Implementation Plan 2019; Cycle Network Plan 2016; Climate Change Action Plan	Important Infrastructure	Cycle training	Boroughwide	Short-term	RBK delivery	0.185	TfL; CIL;
Behaviour Change / Supporting Infrastructure / Low Carbon Transport measures	RBK Third Local Implementation Plan 2019; Cycle Network Plan 2016; Climate Change Action Plan	Important Infrastructure	Behaviour change programme	Boroughwide	Short-term	RBK delivery	0.06	TfL; CIL;

Behaviour Change / Supporting Infrastructure / Low Carbon Transport measures	RBK Third Local Implementation Plan 2019; Cycle Network Plan 2016; Climate Change Action Plan	Important Infrastructure	Workplace Sustainable Transport	Boroughwide	Short-term	RBK delivery	0.03	TfL; CIL;
Behaviour Change / Supporting Infrastructure / Low Carbon Transport measures	RBK Third Local Implementation Plan 2019; Cycle Network Plan 2016; Climate Change Action Plan	Important Infrastructure	Schools Sustainable Transport	Boroughwide	Short-term	RBK delivery	TBC	TfL; CIL;
Behaviour Change / Supporting Infrastructure / Low Carbon Transport measures	RBK Third Local Implementation Plan 2019; Cycle Network Plan 2016; Climate Change Action Plan	Important Infrastructure	Cycle Hangars	Various sites generated from resident requests	Short-term	RBK delivery	TBC	TfL; CIL;
Behaviour Change / Supporting Infrastructure / Low Carbon Transport measures	RBK Third Local Implementation Plan 2019; Cycle Network Plan 2016; Climate Change Action Plan	Important Infrastructure	Cycle Parking	Various sites	Short-term	RBK delivery	0.15	TfL; CIL;
Behaviour Change / Supporting Infrastructure / Low Carbon Transport measures	RBK Third Local Implementation Plan 2019; Cycle Network Plan 2016; Climate Change Action Plan	Essential Infrastructure	Electric Vehicle Charging Infrastructure	Boroughwide various locations	Short-term	RBK delivery	TBC	TfL; ORCS; CIL;
Behaviour Change / Supporting Infrastructure / Low Carbon Transport measures	RBK Third Local Implementation Plan 2019; Cycle Network Plan 2016; Climate Change Action Plan	Important Infrastructure	Car Clubs	Boroughwide various locations	Short-term	RBK delivery	TBC	RBK; suppliers

Behaviour Change / Supporting Infrastructure / Low Carbon Transport measures	RBK Third Local Implementation Plan 2019; Cycle Network Plan 2016; Climate Change Action Plan	Important Infrastructure	Dockless E-Bikes	Boroughwide various locations	Short-term	RBK delivery	0.012	TfL, Suppliers contributions
Highways & Transport Schemes	Climate Change Action Plan	Essential Infrastructure	LED Programme	Boroughwide	Short-term	RBK delivery	2.2	RBK Capital; CIL
Highways & Transport Schemes	RBK Third Local Implementation Plan 2019; Climate Change Action Plan	Essential Infrastructure	School Streets	Boroughwide	Short-term	RBK delivery	0.188	TfL LIP; CIL, s106; RBK Capital
Highways & Transport Schemes	RBK Third Local Implementation Plan 2019; Climate Change Action Plan	Essential Infrastructure	The Groves Area	The Groves Area	Short-term	RBK delivery	0.065	TfL LIP; CIL, s106
Highways & Transport Schemes	RBK Third Local Implementation Plan 2019; Climate Change Action Plan	Essential Infrastructure	Orchard Road /Hunters Road Area	Orchard Road /Hunters Road Area	Short-term	RBK delivery	0.07	TfL LIP; CIL, s106
Highways & Transport Schemes	RBK Third Local Implementation Plan 2019; Climate Change Action Plan	Essential Infrastructure	Coombe Lane West (CLW) Corridor (A238) /Galsworth Road Junction	Coombe lane West / Galsworthy Road Junction	Short-term	RBK delivery	0.23	TfL LIP; CIL, s106
Highways & Transport Schemes	RBK Third Local Implementation Plan 2019; Climate Change Action Plan	Essential Infrastructure	20mph	Boroughwide	Short-term	RBK delivery	0.06	TfL LIP; CIL, s106
Highways & Transport Schemes	RBK Third Local Implementation Plan 2019; Climate Change Action Plan	Essential Infrastructure	A2043 Malden Road (Fountain Roundabout to Blakes Lane Jct)	A2043 Malden Road (Fountain Roundabout to Blakes Lane Jct)	Short-term	RBK delivery	0.065	TfL LIP; CIL, s106
Highways & Transport Schemes	RBK Third Local Implementation Plan 2019;	Essential Infrastructure	Birkenhead Avenue/Gordon Road	Birkenhead Avenue/Gordon Road	Short-term	RBK delivery	0.06	TfL LIP; CIL, s106

	Climate Change Action Plan							
Highways & Transport Schemes	RBK Third Local Implementation Plan 2019; Climate Change Action Plan	Essential Infrastructure	Albert Road LTN	Albert Road	Short-term	RBK delivery	0.06	TfL LIP; CIL, s106
Highways & Transport Schemes	RBK Third Local Implementation Plan 2019; Climate Change Action Plan	Essential Infrastructure	King Charles LTN	King Charles Road, adjoining Alexandra Playground	Short-term	RBK delivery	0.02	TfL LIP; CIL, s106
Highways & Transport Schemes	RBK Third Local Implementation Plan 2019; Climate Change Action Plan	Essential Infrastructure	Lower Ham LTN	Lower Ham Road	Short-term	RBK delivery	0.02	TfL LIP; CIL, s106
Highways & Transport Schemes	RBK Third Local Implementation Plan 2019; Climate Change Action Plan	Essential Infrastructure	Alexandra Drive	Alexandra Drive, Surbiton	Short-term	RBK delivery	0.045	TfL LIP; CIL, s106
Highways & Transport Schemes	RBK Third Local Implementation Plan 2019; Climate Change Action Plan	Essential Infrastructure	Coombe Road, Kingston	Coombe Road, Kingston	Short-term	RBK delivery	0.05	TfL LIP; CIL, s106
Highways & Transport Schemes	RBK Third Local Implementation Plan 2019; Climate Change Action Plan	Essential Infrastructure	Cranes Park// Lingfield Ave/ Villiers Ave Area	Cranes Park// Lingfield Ave/ Villiers Ave Area	Short-term	RBK delivery	0.07	TfL LIP; CIL, s106
Highways & Transport Schemes	RBK Third Local Implementation Plan 2019; Climate Change Action Plan	Essential Infrastructure	North Kingston Area - Phase 2	North Kingston Area - Phase 2	Short-term	RBK delivery	0.079	TfL LIP; CIL, s106
Highways & Transport Schemes	RBK Third Local Implementation Plan 2019; Climate Change Action Plan	Essential Infrastructure	A243 Healthy Streets Area - Phase 2	A243 Healthy Streets Area - Phase 2	Short-term	RBK delivery	0.095	TfL (bid pending); CIL, s106

Highways & Transport Schemes	RBK Third Local Implementation Plan 2019; Climate Change Action Plan	Essential Infrastructure	Berrylands Healthy Streets Area	Berrylands area	Short-term	RBK delivery	TBC	TfL LIP; CIL, s106
Highways & Transport Schemes	RBK Third Local Implementation Plan 2019; Climate Change Action Plan	Essential Infrastructure	Eden Street	Eden Street	Short-term	RBK & TfL delivery	TBC	TfL LIP; CIL, s106
Highways & Transport Schemes	RBK Third Local Implementation Plan 2019; Climate Change Action Plan	Essential Infrastructure	Kingston Town Centre Gyrotory Major Scheme	Kingston town centre	Medium-term	RBK & TfL delivery - planning & highways	TBC	S106/CIL/TfL
Highways & Transport Schemes	RBK Third Local Implementation Plan 2019;	Essential Infrastructure	A3 Hook Roundabout Improvements	A3 Hook roundabout	Long-term	TfL delivery, RBK	TBC	TBC
Highways & Transport Schemes	RBK Third Local Implementation Plan 2019;	Essential Infrastructure	A3 Fullers Way North Junction Improvement	A3/Fullers Way North Junction	Medium-term	TfL delivery, RBK	TBC	TfL, S106/CIL
Parking Schemes	Borough Parking Review; Climate Change Action Plan	Important Infrastructure	Latchmere Lane area	Latchmere Lane area	Short-term	RBK delivery	0.01	CIL, s106
Parking Schemes	Borough Parking Review; Climate Change Action Plan	Important Infrastructure	Canbury	Canbury	Short-term	RBK delivery	0.01	CIL, s106
Parking Schemes	Borough Parking Review; Climate Change Action Plan	Important Infrastructure	Norbiton CPZ	Norbiton CPZ	Short-term	RBK delivery	0.01	CIL, s106
Parking Schemes	Borough Parking Review; Climate Change Action Plan	Important Infrastructure	King Henry's Road	King Henry's Road	Short-term	RBK delivery	0.01	CIL, s106
Parking Schemes	Borough Parking Review; Climate Change Action Plan	Important Infrastructure	Blagdon Road	Blagdon Road	Short-term	RBK delivery	0.01	CIL, s106
Parking Schemes	Borough Parking Review; Climate	Important Infrastructure	Albert, Queens & George Rds	Albert, Queens & George Rds	Short-term	RBK delivery	0.01	CIL, s106

	Change Action Plan							
Parking Schemes	Borough Parking Review; Climate Change Action Plan	Important Infrastructure	Georgia, Springfield & California Rds	Georgia, Springfield & California Rds	Short-term	RBK delivery	0.01	CIL, s106
Parking Schemes	Borough Parking Review; Climate Change Action Plan	Important Infrastructure	Appleton Gardens	Appleton Gardens	Short-term	RBK delivery	0.01	CIL, s106
Parking Schemes	Borough Parking Review; Climate Change Action Plan	Important Infrastructure	Orme Road / Kenley Road / Arundel Road / Revell Road	Orme Road / Kenley Road / Arundel Road / Revell Road	Short-term	RBK delivery	0.01	CIL, s106
Parking Schemes	Borough Parking Review; Climate Change Action Plan	Important Infrastructure	Warboys Road / Warboys Approach / Ladderstile Ride	Warboys Road / Warboys Approach / Ladderstile Ride	Short-term	RBK delivery	0.01	CIL, s106
Parking Schemes	Borough Parking Review; Climate Change Action Plan	Important Infrastructure	Home Zone/Welbeck Close/St James Close	Home Zone/Welbeck Close/St James Close	Short-term	RBK delivery	0.01	CIL, s106
Parking Schemes	Borough Parking Review; Climate Change Action Plan	Important Infrastructure	Worcester Park area	Worcester Park area	Short-term	RBK delivery	0.01	CIL, s106
Parking Schemes	Borough Parking Review; Climate Change Action Plan	Important Infrastructure	Browns Rd area	Browns Rd area	Short-term	RBK delivery	0.01	CIL, s106
Parking Schemes	Borough Parking Review; Climate Change Action Plan	Important Infrastructure	Beaconsfield Road Area	Beaconsfield Road Area	Short-term	RBK delivery	0.01	CIL, s106
Parking Schemes	Borough Parking Review; Climate Change Action Plan	Important Infrastructure	Review Riverside Zone	Review Riverside Zone	Short-term	RBK delivery	0.01	CIL, s106
Parking Schemes	Borough Parking Review; Climate Change Action Plan	Important Infrastructure	Durbin Road Area	Durbin Road Area	Short-term	RBK delivery	0.01	CIL, s106

Parking Schemes	Borough Parking Review; Climate Change Action Plan	Important Infrastructure	Chessington Crofts area	Chessington Crofts area Chessington North Station Area	Short-term	RBK delivery	0.02	CIL, s106
Parking Schemes	Borough Parking Review; Climate Change Action Plan	Important Infrastructure	Hunters Road	Hunters Road	Short-term	RBK delivery	0.01	CIL, s106
Parking Schemes	Borough Parking Review; Climate Change Action Plan	Important Infrastructure	Orchard Road	Orchard Road	Short-term	RBK delivery	0.01	CIL, s106
Parking Schemes	Borough Parking Review; Climate Change Action Plan	Important Infrastructure	Cricketers Close	Cricketers Close	Short-term	RBK delivery	0.01	CIL, s106
Parking Schemes	Borough Parking Review; Climate Change Action Plan	Important Infrastructure	Rollesby Road	Rollesby Road	Short-term	RBK delivery	0.01	CIL, s106
Parking Schemes	Borough Parking Review; Climate Change Action Plan	Important Infrastructure	Lofthouse Place	Lofthouse Place	Short-term	RBK delivery	0.01	CIL, s106
Parking Schemes	Borough Parking Review; Climate Change Action Plan	Important Infrastructure	Verona Drive	Verona Drive	Short-term	RBK delivery	0.01	CIL, s106
Parking Schemes	Borough Parking Review; Climate Change Action Plan	Important Infrastructure	Selby Close/York Way area	Selby Close/York Way area	Short-term	RBK delivery	0.01	CIL, s106
HGV management and intrusion	RBK Third Local Implementation Plan 2019;	Important Infrastructure	Clayton Road	Clayton Road	Short-term	RBK delivery	TBC	CIL, s106; TfL LIP
HGV management and intrusion	RBK Third Local Implementation Plan 2019;	Important Infrastructure	Villiers Avenue/Lamberts Road	Villiers Avenue/Lamberts Road	Short-term	RBK delivery	TBC	CIL, s106; TfL LIP
HGV management and intrusion	RBK Third Local Implementation Plan 2019;	Important Infrastructure	Hawks Road/Villiers Road	Hawks Road/Villiers Road	Short-term	RBK delivery	TBC	CIL, s106; TfL LIP

HGV management and intrusion	RBK Third Local Implementation Plan 2019;	Important Infrastructure	Tudor Drive/Park Road	Tudor Drive/Park Road	Short-term	RBK delivery	TBC	CIL, s106; TfL LIP
Bus Priority	RBK Third Local Implementation Plan 2019;	Critical Infrastructure	Eden Street	Eden Street	Short-term	RBK/TfL delivery	0.045	TfL (bid pending); CIL, s106
Bus Priority	RBK Third Local Implementation Plan 2019;	Critical Infrastructure	A2043 Malden Road	A2043 Malden Road	Short-term	RBK/TfL delivery	0.7	TfL (bid pending); CIL, s106
Bus Priority	RBK Third Local Implementation Plan 2019;	Important Infrastructure	Motspur Park	Motspur Park	Short-term	RBK/TfL delivery	0.05	TfL (bid pending); CIL, s106

4.10 Flood resilience

4.10.1 Introduction

Sustainable Drainage Systems (SuDS) to manage surface water drainage and mitigate flood risk in the borough.

4.10.2 RBK responsibilities and requirements

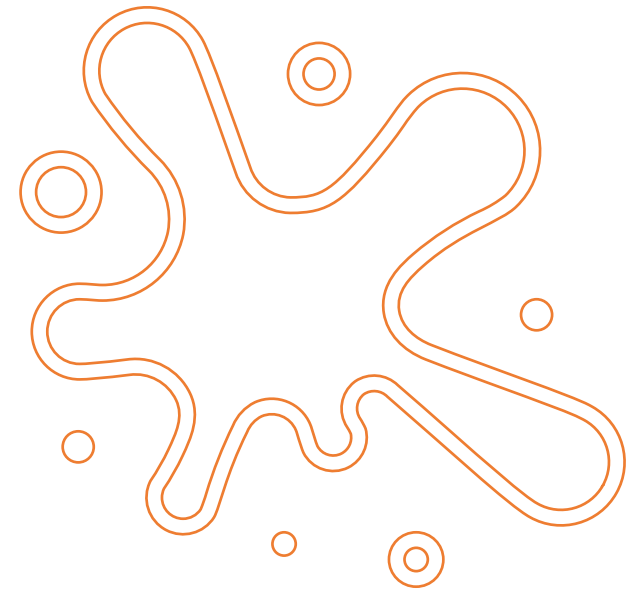
Climate change will result in extreme flood events occurring more frequently in the future, with the potential to affect residents and businesses in a number of areas of the borough. The Council will seek to reduce flood risk and ensure resilience against the future impact of flooding in accordance with the National Planning Policy Framework.

4.10.3 Evidence base

The evidence base used to identify the need for the projects which follow is set out below:

- Surface Water Management Plan (near publication)

Note: The IDP does not seek to examine the robustness of the evidence base noted above.



4.10.4 Flood resilience project list

Category	Source	Classification	Project Name	Proposed Location	Timing of Requirement	Delivery Mechanism & Governance arrangements	Estimated Cost (£M)	Potential Funding
Flood resilience	Surface Water Management Plan (unpublished)	Essential Infrastructure	King Georges Field	King Georges Field, Chessington	Short-term	RBK delivery	TBC	EA; Thames Water; CIL
Flood resilience	Surface Water Management Plan (near publication)	Important Infrastructure	Alexandra Rec	Alexandra Recreation Ground, Surbiton	Short-term	RBK delivery	TBC	EA; Thames Water; CIL
Flood resilience	Surface Water Management Plan (near publication)	Important Infrastructure	Latchmere Park	Latchmere Recreation Ground, North Kingston	Short-term	RBK delivery	TBC	EA; Thames Water; CIL
Flood resilience	Surface Water Management Plan (unpublished)	Important Infrastructure	Critical Drainage Areas	Acre Road, North Kingston	Short-term	RBK delivery	0.328	EA; Thames Water; CIL
Flood resilience	Surface Water Management Plan (unpublished)	Important Infrastructure	Critical Drainage Areas	Old Malden	Short-term	RBK delivery	TBC	EA; Thames Water; CIL
Flood resilience	Surface Water Management Plan (unpublished)	Important Infrastructure	Critical Drainage Areas	Seething Wells Area, Surbiton / Berrylands	Short-term	RBK delivery	TBC	EA; Thames Water; CIL

4.11 Housing and property

4.11.1 Introduction

Affordable housing and public property maintenance and improvement works.

4.11.2 RBK responsibilities and requirements

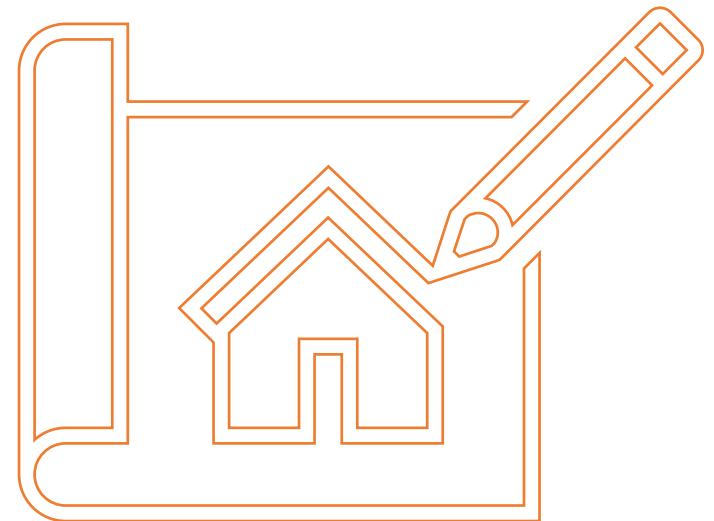
The Council will work positively and proactively with key stakeholders and development industry partners to facilitate the delivery of affordable homes and public facilities to help meet the borough's increasing needs.

4.11.3 Evidence base

The evidence base used to identify the need for the projects which follow is set out below:

- Kingston's housing accommodation needs assessment
- Corporate Landlord - Asset Strategy/ Capital Assets

Note: The IDP does not seek to examine the robustness of the evidence base noted above.



4.11.4 Housing and property project list

Category	Source	Classification	Project Name	Proposed Location	Timing of Requirement	Delivery Mechanism & Governance arrangements	Estimated Cost (£M)	Potential Funding
Property	Kingston's housing accommodation needs assessment	Critical Infrastructure	Acre Road Affordable Houses	Acre Rd	Short-term	TBC	TBC	TBC
Property	Corporate Landlord - Asset Strategy/ Capital Assets	Essential Infrastructure	Latchmere Pavilion	Latchmere Recreation Ground	Short-term	RBK Delivery	0.3	RBK General; DLUHC funding for Changing Places Toilet - separate
Property	Corporate Landlord - Asset Strategy/ Capital Assets	Important Infrastructure	King Edward Recreation Ground Pavilion	King Edward Recreation Ground	Short-term	RBK Delivery	0.4	RBK General
Property	Corporate Landlord - Asset Strategy/ Capital Assets	Important Infrastructure	King George V Pavilion	King George V Playing Fields	Short-term	RBK Delivery	0.4	RBK General
Property	Corporate Landlord - Asset Strategy/ Capital Assets	Important Infrastructure	Cemetery Pergola	Kingston Cemetery & Crematorium	Immediate	RBK Delivery	0.2	RBK General
Property	Corporate Landlord - Asset Strategy/ Capital Assets	Important Infrastructure	Changing Places Toilets - Latchmere Rec	Latchmere Rec Ground - Pavilion	Immediate	RBK Delivery	0.1	DLUHC for CP facility; RBK match funding; RBK service costs
Property	Corporate Landlord - Asset Strategy/ Capital Assets	Important Infrastructure	Changing Places Toilets - Hook Centre	Hook Centre	Immediate	RBK Delivery	0.1	DLUHC for CP facility; RBK match funding; RBK service costs
Property	Corporate Landlord - Asset Strategy/ Capital Assets	Important Infrastructure	Changing Places Toilets - Marketplace/ surrounds	Marketplace/ surrounds	Short-term	RBK Delivery	0.1	DLUHC for CP facility; RBK match funding; RBK service costs

Property	Corporate Landlord - Asset Strategy/ Capital Assets	Critical Infrastructure	Surbiton Cemetery	Surbiton Cemetery	Immediate	RBK Delivery	0.25	RBK General
Property - Car Parks	Corporate Landlord - Asset Strategy/ Capital Assets	Important Infrastructure	Tolworth Car Park	Tolworth	Short-term	RBK Delivery	0.3	RBK General
Property - Libraries/ Culture/ Heritage	Library provision	Important Infrastructure	New Malden Library	New Malden	Immediate	RBK Delivery	1	RBK General - 0.4 approved
Property - Libraries/ Culture/ Heritage	Library provision, community hub/ work place; Cultural offer	Important Infrastructure	Kingston Library	Kingston	Short-term	RBK Delivery	0.8	RBK General; Arts Council LIF; Heritage Lottery; 0.2 for Roof works
Property - Libraries/ Culture/ Heritage	Cultural offer	Essential Infrastructure	Kingston Library & Kingston Museum long term development	Kingston	Medium-term	RBK Delivery	6-8	Heritage Lottery; Arts Council?
Property - Libraries/ Culture/ Heritage	Cultural offer	Essential Infrastructure	Kingston Library & Kingston Museum scoping/ visioning for long term development	Kingston	Immediate	RBK Delivery	0.25	RBK General
Property - Libraries/ Culture/ Heritage	Library provision, community hub/ work place	Essential Infrastructure	Surbiton Library	Surbiton	Immediate	RBK Delivery	0.6	RBK General
Property - Libraries/ Culture/ Heritage	Library provision, community hub/ work place	Essential Infrastructure	Hook Centre/ Library	Hook, Chessington	Short-term	RBK Delivery	1.5	RBK General; Arts Council LIF
Property - Libraries/ Culture/ Heritage	Library provision	Important Infrastructure	Surbiton Library Annexe	Surbiton	Medium-term	RBK Delivery	0.2	RBK General
Property - Libraries/ Culture/ Heritage	Library provision	Important Infrastructure	Tudor Library extension	TBC	Medium-term	RBK Delivery	0.2	RBK General

Property - Libraries/ Culture/ Heritage	Library provision	Important Infrastructure	Tudor Hall & Playground	TBC	Immediate	RBK Delivery	0.1	RBK General
Property - Libraries/ Culture/ Heritage	Library provision	Important Infrastructure	Old Malden Library	TBC	Short-term	RBK Delivery	0.2	RBK General
Property - Libraries/ Culture/ Heritage	Library provision	Essential Infrastructure	Tolworth Library	Tolworth	Short-term	RBK Delivery	0.15	RBK General
Property - Libraries/ Culture/ Heritage	Cultural offer	Important Infrastructure	Kingston Museum	Kingston	Short-term	RBK Delivery	2	RBK General; Heritage Lottery
Property	Future workplace; Cultural offer	Important Infrastructure	Sessions House	Surbiton	Short-term	RBK Delivery	1.5	RBK General
Property - Libraries/ Culture/ Heritage	Corporate Landlord - Asset Strategy/ Capital Assets	Essential Infrastructure	CCTV infrastructure - CCTV Control room and BEC	Kingston	Short-term	RBK Delivery	2.5	RBK General; DLUHC, GLA/ TfL
Property - Libraries/ Culture/ Heritage	Cultural offer	Important Infrastructure	Coronation Stone - future	Kingston	Medium-term	RBK Delivery	0.2	RBK General
Property - Libraries/ Culture/ Heritage	Cultural offer	Important Infrastructure	Kingston History Centre (GH)	Kingston	Short-term	RBK Delivery	0.5	RBK General; Arts Council LIF; Heritage Lottery
Property - Libraries/ Culture/ Heritage	Library provision	Essential Infrastructure	Libraries ICT/ data Infrastructure project	Boroughwide at Library locations	Short-term	RBK Delivery	0.4	RBK General; Arts Council LIF
Property - Car Parks	Corporate Landlord - Asset Strategy/ Capital Assets	Important Infrastructure	Harrow Close Car Park area redesign and remodel	Harrow Close	Immediate	RBK Delivery	0.7	RBK General
Property	Corporate Landlord - Asset Strategy/ Capital Assets	Important Infrastructure	Christ Church Primary School playing field works	TBC	Short-term	RBK Delivery	0.25	RBK General

Property - Crematoria	Corporate Landlord - Asset Strategy/ Capital Assets	Essential Infrastructure	Kingston Crematorium expansion, accessibility and modernisation	Kingston Cemetery & Crematorium	Ongoing	RBK Delivery	2	RBK General
Property	Corporate Landlord - Asset Strategy/ Capital Assets	Essential Infrastructure	Caretaker House re-purpose - Moor Lane	Moor Lane	Immediate	RBK Delivery	0.2	RBK General
Property	Corporate Landlord - Asset Strategy/ Capital Assets	Essential Infrastructure	Caretaker Houses re-purpose	Boroughwide	Short-term	RBK Delivery	4	RBK General
Property	Corporate Landlord - Asset Strategy/ Capital Assets	Essential Infrastructure	Robin Hood Primary - turning/ access CHECK not repeat of AfC	Robin Hood Primary School	Immediate	RBK Delivery	0.3	RBK General
Property	AfC	Essential Infrastructure	Relocation of vehicle depot - associated UKPN/ other works	Cox Lane /Jubilee Way	Short-term	RBK Delivery	0.5	RBK General
Property	Car Parks - Infrastructure/ Accessibility	Important Infrastructure	Bittoms Car Park improvements	Bittoms Car Park	Short-term	RBK Delivery	0.15	RBK General
Property	Car Parks - Infrastructure/ Accessibility	Important Infrastructure	Rose Car Park Lifts and ancillary	Rose Car Park	Immediate	RBK Delivery	0.9	RBK General
Property	Town Centres & High Street	Essential Infrastructure	Market House - Check not a duplication of Regeneration	Market Place	Short-term	RBK Delivery	3.5	RBK General
Property	Corporate Landlord - Asset Strategy/ Capital Assets	Essential Infrastructure	Tolworth Leisure Centre refurb	Tolworth Recreation/ Leisure Centre	Short-term	RBK Delivery	0.6	RBK General
Property	Corporate Landlord - Asset Strategy/ Capital Assets	Essential Infrastructure	Future Workplace Programme	Options appraisal with recommended future location to be presented to committee, this will determine future location for staff.	Ongoing	RBK Delivery	TBC	N/A