



SHAPING THE FUTURE TOGETHER

Our vision for Kingston
Short summary of feedback and next steps

2023–2041

Thank you to all of our communities across the borough for taking the time to have your say in the further engagement we carried out last summer on the draft Local Plan.



The consultation (Regulation 18) took place from 29 June to 30 September 2021. We have been reviewing everyone's comments and are now preparing the draft new Local Plan, to share with you for your views later in 2022.

This short document provides a summary of the comments we have received and how we're using your feedback to inform the draft new Local Plan.



The further engagement

The new Local Plan will capture our vision for the future of the borough. It will be used to guide development in Kingston and help decide planning applications. It will set out how we seek to manage the London Plan's housing targets and will be used to guide what development goes where.

In 2019 the council carried out early engagement on the content of a new Local Plan. The feedback given is still helping to develop the draft plan currently being put together. But a lot has changed in the last few years which is why we carried out further engagement last summer (summer 2021) to see if your views, aspirations and concerns had changed, as well as encouraging others to let us know their thoughts.

It is clear from the feedback we received that people are passionate about Kingston and want the best for its future.



2,300

people visited our Local Plan engagement website to find out more



More than

1,100



people and organisations gave us their views through surveys, letters, emails, meetings and public events.

What you told us and how we're using your feedback

The document we published to support the further engagement consultation was called [Shaping the Future Together - Our vision for Kingston 2023 - 2041](#). It contained background information about the Local Plan process and was divided up into eight topic areas which we asked for your feedback on. This document shares some of the key things you told us about each topic, what we need to think about now and how we're using your feedback.

A more detailed document with further information about the feedback we heard is also available to look at. When we publish the draft Local Plan for your views later in 2022 we will set out how we have been able to respond to the issues people raised.



How we plan for good growth

What you told us

Concerns about the height of new development and the impact on Kingston's character and heritage.



What we need to think about

We need more new homes in Kingston, including affordable homes for local people. The Mayor of London, in the new London Plan, has imposed a housing target on Kingston to build 964 homes a year. If we fail to meet this target the borough risks losing local control of its planning decisions.



How we're using your feedback

We are undertaking assessments of the character of different areas of the borough to understand their potential to accommodate growth.

We are also working with a Citizens' Panel to help inform a plan for the Kingston town centre area which will create new guidance and a design code to steer development in this area, and help to ensure our heritage buildings and spaces are respected and enhanced.

What you told us

There is a split between people who want to see growth focused in town centres and those that want to see it spread more evenly throughout the borough.



What we need to think about

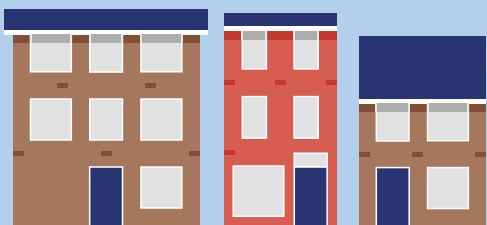
We need to build more homes, community facilities and workspaces for Kingston's growing population. We want to make sure they are in the right place, are accessible, inclusive and sustainable.



How we're using your feedback

Based on feedback, the new Local Plan will seek to provide a mix of growth options, directing a large portion of growth to our most sustainable and accessible locations such as town centres and near railway stations. This would be balanced with some growth on small sites dispersed throughout the borough.

We are reviewing your feedback submitted through the Site Assessments Update and the Call for Sites to decide what sites should be included in the Local Plan.



Housing

What you told us

We received a wide range of comments about the type of homes you want to see in Kingston and the need for more affordable housing for local people.

What we need to think about

There is an acute need for more affordable housing in the borough and we will need to consider how this can be delivered. We also need to ensure we have the right type of housing to meet the needs of different groups of people, including our growing population of older people.

How we're using your feedback

We will identify and consider allocating sites for a range of different housing types, including homes for older people.



What you told us

You want to see empty buildings converted into housing and/or new homes built on previously developed land known as brownfield sites.

What we need to think about

We need to ensure that empty buildings, such as offices, cannot realistically continue to be used for their original purpose before we allow them to be converted into housing. We also need to think about the living conditions, such as potential noise issues, for future occupants of any converted buildings.

How we're using your feedback

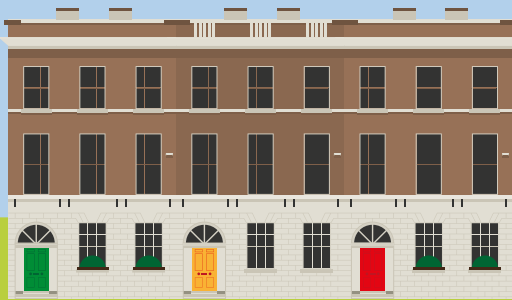
We will prepare policies in the new Local Plan that support the development of housing on brownfield sites, where appropriate.



Design, heritage and culture

What you told us

Concerns about the impact of development on the character of Kingston and its heritage.



What we need to think about

The historic environment and character of Kingston is an important part of the borough. We need to ensure growth is properly managed, and look at the most appropriate areas for development.



How we're using your feedback

As well as creating the Local Plan, we are also considering preparing additional planning guidance, in collaboration with our communities, on what type of design is appropriate in different locations and about what we would like development to look like.



What you told us

The pandemic has highlighted the importance of public green space and well designed homes with access to amenity space.

What we need to think about

As we consider how to deliver more homes in the borough we will need to think about how we ensure that future occupants have good access to private and/or public outdoor space.

How we're using your feedback

We will consider having policies in the Local Plan that seek to ensure that new homes have good access to private and/or public outdoor space.



Greener transport and how we move around

What you told us

There is support for greener travel but concerns about prioritising walking, cycling and public transport over car use, which many people are dependent on.



What we need to think about

We need to make it easier and safer for people to make walking, cycling or public transport their first choice to get around. We need to continue to find ways to improve sustainable travel so that as Kingston grows and changes, we can still travel around easily.



How we're using your feedback

We will include policies as part of the Local Plan which focus on transport and greener travel and have also created an Air Quality Action Plan.

We are also rolling out the Mayor of London's Transport Strategy and supporting the Mayor of London's Healthy Streets Approach.



Natural environment

What you told us

Green and open spaces are important for well being and climate change and you want to see green spaces protected, enhanced and made more accessible.



What we need to think about

To provide up-to-date evidence for our Local Plan, we have commissioned an independent review of the borough's Sites of Importance for Natural Conservation and identified areas where there is a deficiency in access to open space.



How we're using your feedback

Protecting and enhancing our natural environment will be a key priority of the new Local Plan. We will have policies which will address this - including improving access and walking and cycling connections to public open spaces.

What you told us

Strong support for greening of our streets, buildings and other public spaces (urban greening), creating green corridors and increasing biodiversity.



What we need to think about

We need to investigate how we can increase the amount of urban greening in the borough, including having targets for new buildings and developments to meet.



How we're using your feedback

We will plan positively to enhance biodiversity net-gain while supporting and promoting urban greening initiatives through policies in the Local Plan.



Your neighbourhood and local community

What you told us

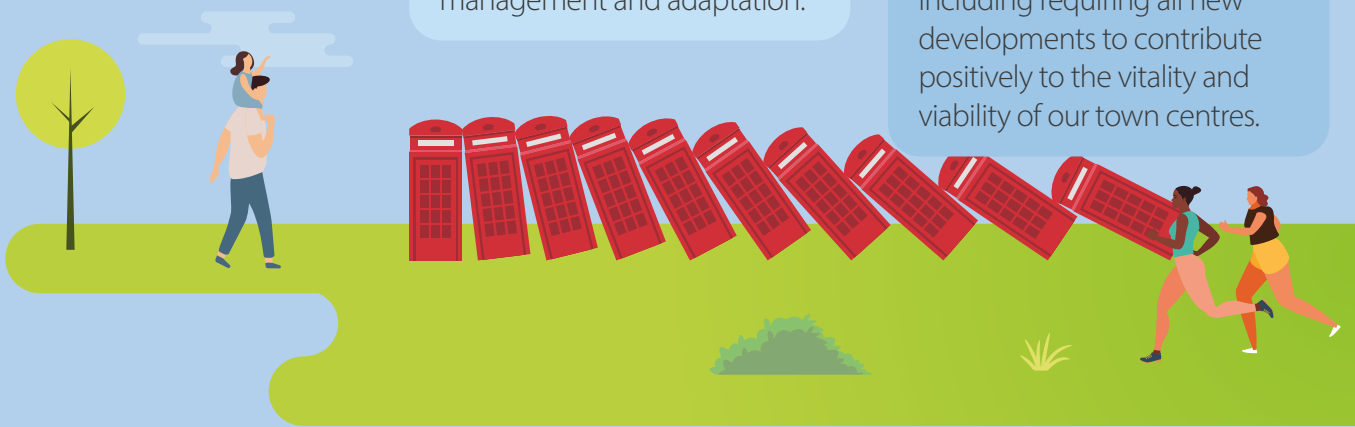
You want to see thriving town centres - not just for shopping but places to relax, enjoy a mix of services, events, food markets and outdoor performance space.

What we need to think about

We need to strengthen the role of town centres as a focus for our communities' sense of place and local identity in the borough as well as take a positive approach to their growth, management and adaptation.

How we're using your feedback

We are preparing policies as part of the Local Plan which will support our neighbourhoods, town centres and places in the borough that are important to our communities, including requiring all new developments to contribute positively to the vitality and viability of our town centres.



Community services and facilities

What you told us

Supporting infrastructure such as schools and doctors surgeries, for new residents, needs to be in place first, before homes are built.

What we need to think about

The council is one of many providers of services and community facilities in the borough.

How we're using your feedback

We are working with our partners and providers to identify the borough's social infrastructure needs and writing an Infrastructure Delivery Plan, which will sit alongside the Local Plan, to help us plan for the facilities our communities need.



Local economy

What you told us

You want to see small businesses valued and supported, and for there to be more affordable workshops as well as offices available.

What we need to think about

We need to think about how we can best support small businesses throughout the borough, including how we can attract more people to our town centres and protect existing commercial space.

How we're using your feedback

We have commissioned an Employment Land Review to understand what the future need is for different types of workspace and plan for this accordingly through policies in our new Local Plan.



What happens next?

We are now working on the first draft of the new Local Plan. We are considering everyone's feedback from the 2019 early engagement and the comments we received in the 2021 further engagement.

We will publish the first draft of the new Local Plan later in 2022 for your views. We will also publish a Statement of Consultation setting out how we have responded to the main issues and comments.

In 2023, after considering your views on the first draft, we will publish the Local Plan Publication Version (Regulation 19) which you will also be able to comment on, before it is submitted for the Examination in Public, which will be led by an inspector.



For more information

If you have any questions please email the team at localplan@kingston.gov.uk or call the council's contact centre on 020 8547 5000 and ask to speak to someone from the Planning Policy team.

