

Memorial Gardens, Kingston upon Thames

The story so far

Kingston Council are excited to share the latest sketch proposals for public realm improvements at Memorial Gardens, which build on the previous work carried out by Kingston First and Kingston Council in 2020 and 2021.

Initial design ideas were drawn up for the site following engagement in 2021 by local landscape architects Davies White Ltd. The Davies White team are now developing the proposals with Kingston Council and Kingston First to be both deliverable and aligned with the emerging Local Plan and the developing plan for the Kingston town centre area: 'Your Vision Our Future'.

We want to make sure that the proposals for the site continue to reflect local aspirations and needs. We are keen to hear from everybody and welcome your thoughts and comments.

We would now like to have your feedback on:

- The updated landscape proposals.
- Ideas relating to seating, activities, planting and play.



Please let us know what you think in person or online by scanning this QR code. Visit Transform Kingston for further information: transformkingston.co.uk/memorial-gardens.

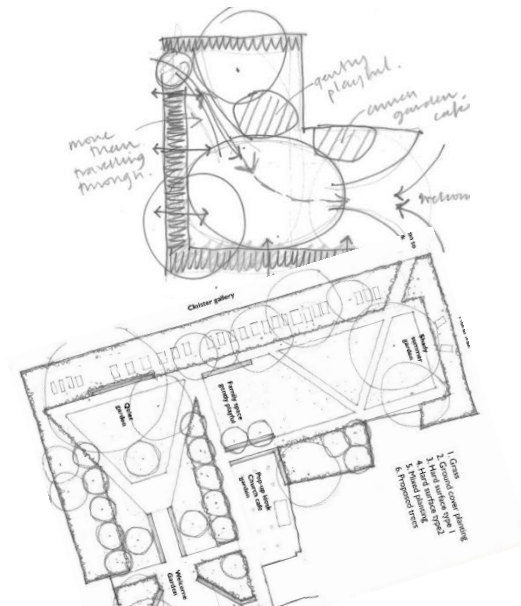
For enquiries about the public realm design proposals:

Regeneration Team

Kingston Council

020 8547 5000

transformkingston@kingston.gov.uk





Key

Existing Landscape

- Existing tree
- Existing Tomb/Grave/Headstone
- Existing Tomb/Grave/Headstone to be relocated

Hard Landscape

- Corten and wooden topped seating
- Natural stone paving
- Yorkstone to match existing
- Cobblestone paving
- Black paved temporary seating area
- Relocated tombstone to accommodate layout
- Playful stepping/seating logs

Soft Landscape

- Mulch
- Species rich lawn
- Biodiversity friendly herbaceous and shrub planting
- Proposed tree

Design Statement

Design and Accessibility

1. War Memorial retained in its current location at the entrance to the Memorial Gardens, with the surrounding surface to enhance the Memorial.
2. Retained Anne Frank Memorial Tree, with improved setting.
3. Wall to be removed and connection into the cloisters.
4. Develop the cloisters art gallery project.
5. Cloister railings to be removed to visually connect the two spaces.
6. New footpath based on Tudor building pattern and identified desire lines. Surface material to be sympathetic to the setting.
7. Specific tombstones to be repositioned to enable access paths.
8. Accessible and inclusive seating at the entrance and throughout the gardens, especially in areas of sunshine. Seats to feature backrests, arm rests and be wheelchair friendly.
9. Low level play features (not playground equipment). E.g. Stepping logs, balance beams and ground level play features.
10. Extra seating in the North end of the site where it is popular during the sunshine hours of the day.
11. North end of the gardens to retain direct footpath under the canopy of the new blossom tree planting.
12. Retain Lt Josiah Clues gravestone - to be a heritage feature in the paving.
13. Flexible space with temporary seating.
14. New and improved planting areas for seasonal interest and biodiversity.
15. Lounger seats on grass area.

Biodiversity

Biodiversity friendly planting and groundcover to be included around headstones. This will be in the form of large perennial beds around the boundary of the site, and will also include a species rich lawn in the centre. This will be designed to create habitats and food sources for wildlife year round.

Lighting

Low level lighting could be introduced to be included to allow park to create an accessible route during the evening. This will be designed in consultation with organisations such as Kingston biodiversity network to help mitigate any impact on wildlife.

Trees

Tree canopies to be raised where appropriate and as agreed with arboricultural consultants and tree officer, to help site feel more open. New trees to be planted to create an attractive avenue at the entrance to draw people in. Species have been selected to add spring interest to the scheme and increase biodiversity. Species include:
 Crataegus laevigata 'Paul's Scarlet' - Hawthorn
 Malus 'Evereste' - Crab Apple
 Malus 'Mokum' - Crab Apple
 Prunus 'Accolade' - Cherry
 Prunus 'Shirofugen' - Cherry
 Prunus 'Taihaku' - Cherry
 Prunus cerasifera 'Pissardii' - Cherry Plum
 Prunus x yedoensis - Yoshino Cherry

Sustainability

Timber used within the scheme is to be FSC certified and reclaimed where possible. Paving materials will be chosen to tie in with existing materials in the adjacent market square and will be sourced from a responsible supplier. Seating will be designed and fabricated in collaboration with local artists to reduce transport costs and emissions as well as supporting the local economy.

No.	Date	By	Revision Notes
2	03/06/2021	DC	Changes to surfacing
3	29/09/2023	DC	Update to memorial area
4	14/11/2023	DC	Updated annotations and layout

dw Davies White Ltd.
 51 Portland Road
 Kingston upon Thames
 Surrey
 KT1 2SH

Purpose of Issue: Planning

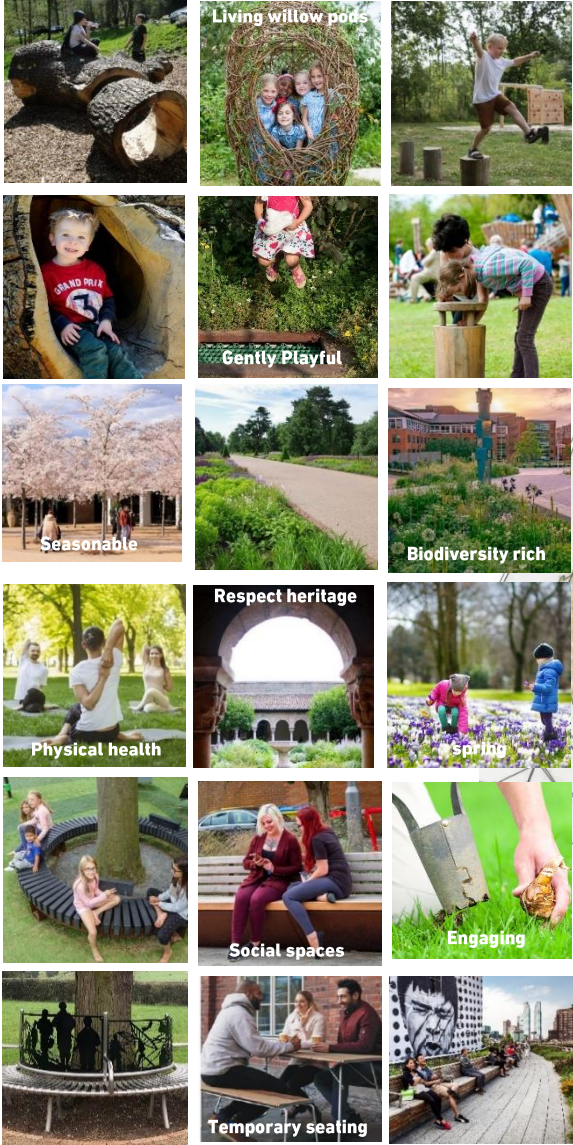
Project Title: Memorial Gardens, Kingston upon Thames

Sheet Title: Masterplan

Drawn by: DC
 Checked by: AD
 Date: 14/11/2023

Revision: 4
 Project Number: T040-NCLA-00-00-DR-L
 Scale: 1:100
 Sheet Number: 1002

Memorial Gardens, Kingston upon Thames – Concept Design Proposals



Living willow pods

Gently Playful

Seasonable

Physical health

Social spaces

Temporary seating

Living willow pods

Gently Playful

Seasonable

Respect heritage

Social spaces

Temporary seating

Living willow pods

Gently Playful

Biodiversity rich

Spring

Engaging

Temporary seating



dw
LANDSCAPE ARCHITECTS
davieswhite.co.uk

Inspiration

Playful seating

Natures home

Quiet spaces

Connections

Similar surfaces

Accessible

Colourful

Connections

Similar surfaces

Accessible

Cross Generational

Please say hello, talk to us and let us know what you think ...
Scan the QR code or visit our project website for further information:
www.transformkingston.co.uk/memorial-gardens

